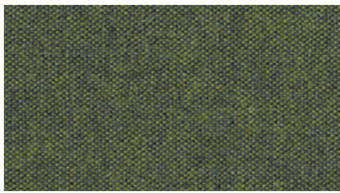


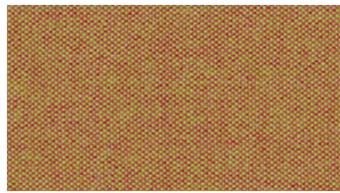


STEP
Upholstery fabrics

 **svensson**



150



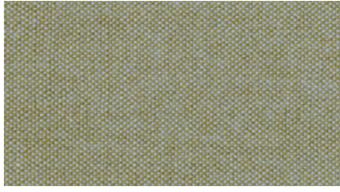
186



222



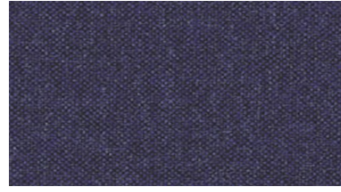
240



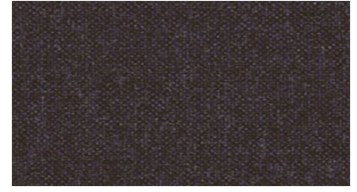
260



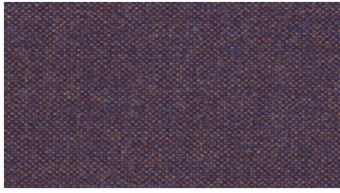
290



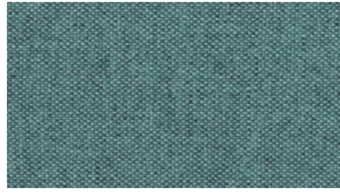
550



559



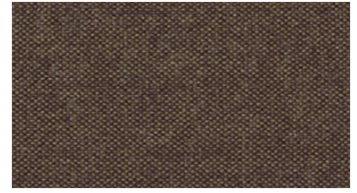
570



609



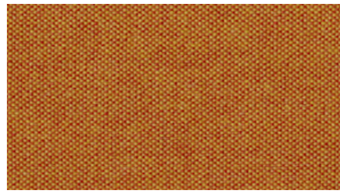
650



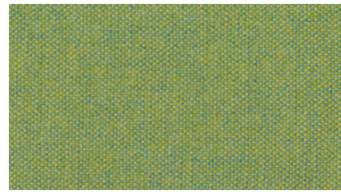
670



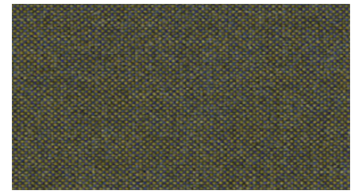
690



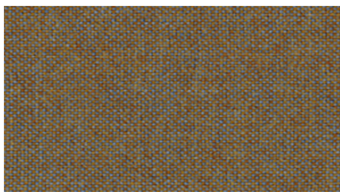
708



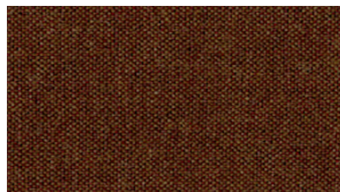
711



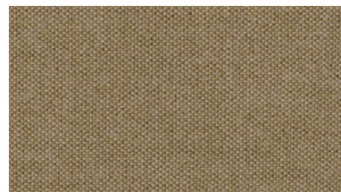
750



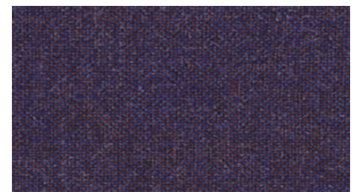
760



789



811



850

STEP

Upholstery fabrics

Bredd: 140 cm
Vikt: 410 g/m²
Material: Ull 75%
 Viskos 25%

Färghärdighet:
 Mot gnidning torr enligt EN ISO 105-X12:
 - 4-5 (Skala 1-5)
 Mot ljus enligt EN ISO 105-B02
 - 5-7 (Skala 1-8)
 Mot gnidning våt enligt EN ISO 105-X12:
 - 3-4 (Skala 1-5)

Nötning:
 Martindale (Enligt EN ISO 12947-2):
 - 50000 varv

Svårantändlighet:
 - BS 5852, Crib 5
 - TB 117
 - IMO FTP Code Part 8 (IMO Res. A.652 (16)
 - UNI 9175, 1 IM

Skötselansvisning:

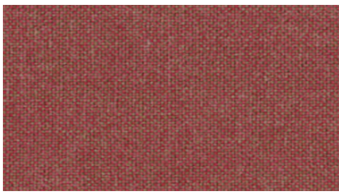


For further information:

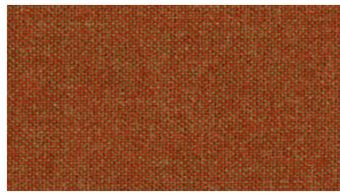
Svensson
 511 82 Kinna, Sweden

T: +46 320 20 92 00
 F: +46 320 21 10 10
 E: info@ludvigsvensson.com

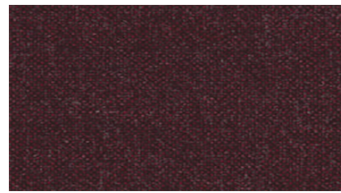




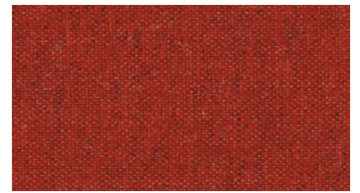
860



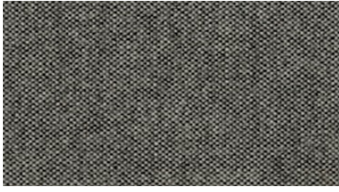
870



886



888



900



990

STEP

Upholstery fabrics

Bredd: 140 cm
Vikt: 410 g/m²
Material: Ull 75%
Viskos 25%

Färghärdighet:
Mot gnidning torr enligt EN ISO 105-X12:
- 4-5 (Skala 1-5)
Mot ljus enligt EN ISO 105-B02
- 5-7 (Skala 1-8)
Mot gnidning våt enligt EN ISO 105-X12:
- 3-4 (Skala 1-5)

Nötning:
Martindale (Enligt EN ISO 12947-2):
- 50000 varv

Svårantändlighet:
- BS 5852, Crib 5
- TB 117
- IMO FTP Code Part 8 (IMO Res. A.652 (16)
- UNI 9175, 1 IM

Skötselansvisning:



For further information:

Svensson
511 82 Kinna, Sweden

T: +46 320 20 92 00
F: +46 320 21 10 10
E: info@ludvigsvensson.com

