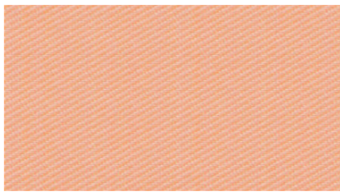


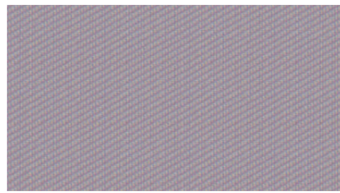


CORE
Hanging fabrics

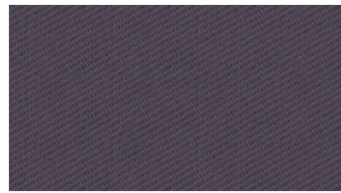
 **svensson**



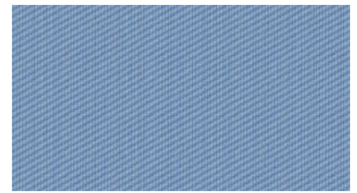
3014



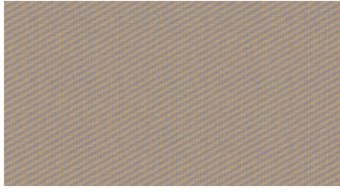
4122



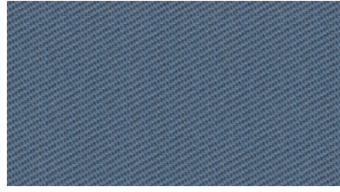
4262



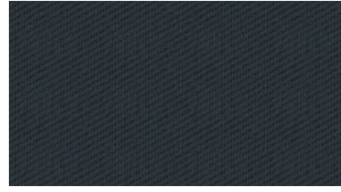
4324



4431



4443



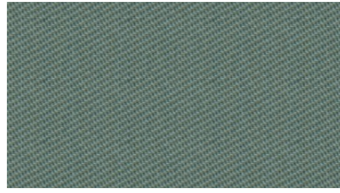
4472



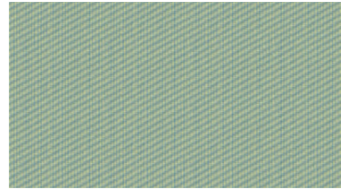
4554



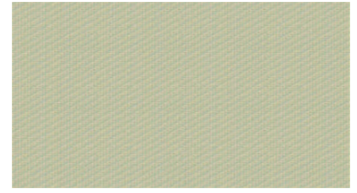
4872



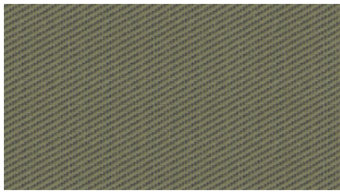
5052



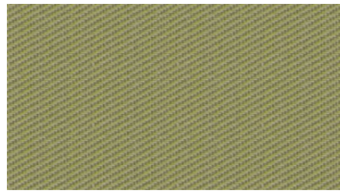
5232



5421



5671



6042



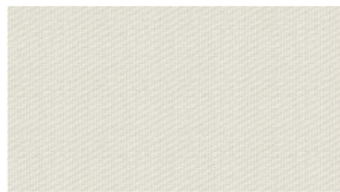
6404



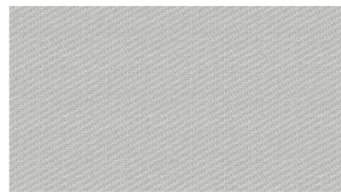
6510



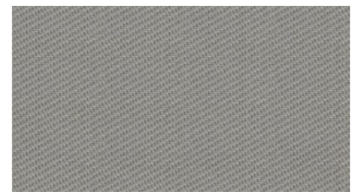
6633



8000



8110



8440

CORE

Hanging fabrics

Bredd: 300 cm
Vikt: 215 g/m²
Material: Trevira CS 100%
Krympning: 2 %

Färghårdighet:
 Mot ljus enligt EN ISO 105-B02
 - ≥ 5-7 (Skala 1-8)
 Mot tvätt enligt EN ISO 105-C06
 - ≥ 5 (Skala 1-5)

Svårantändlighet:
 - BS 5867-2 Type B - DIN 4102-1
 B1 - IMO FTP Code 2010:
 - DIN 4102-1 B1
 - IMO FTP Code 2010: Part 7
 - NF P 92-503-507, M1
 - EN 13773, Class 1
 - EN 13501-1, Class B-s1, d0
 - NFPA 701
 - UNI 8456/8457
 - SN 198898

For further information:

Svensson
 511 82 Kinna, Sweden

T: +46 320 20 92 00
 F: +46 320 21 10 10
 E: info@ludvigsvensson.com

Skötselansvisning:

