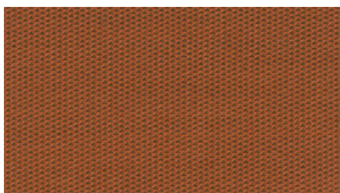
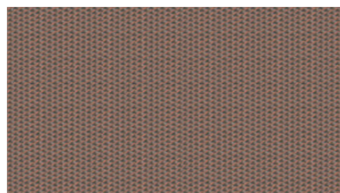


**NODE**  
Upholstery fabrics

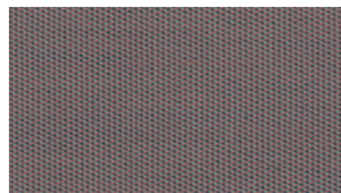
 **svensson**



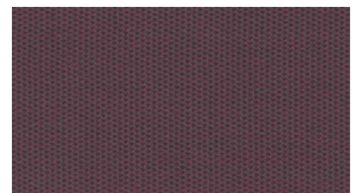
3045



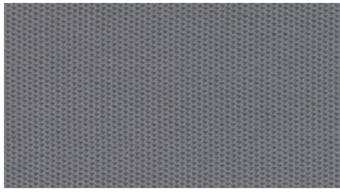
3061



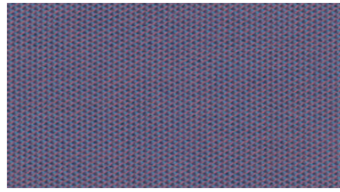
3371



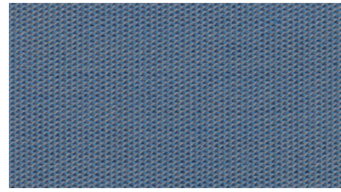
3854



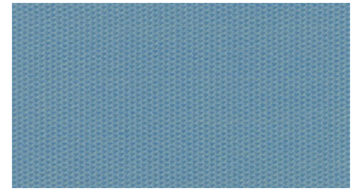
4070



4244



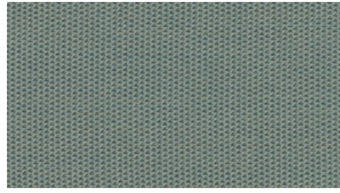
4444



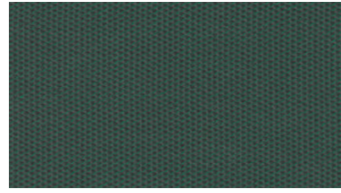
4633



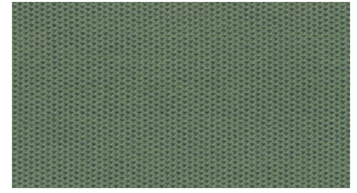
4654



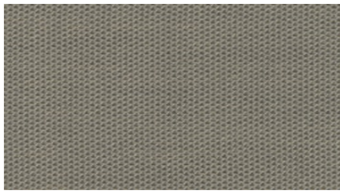
4842



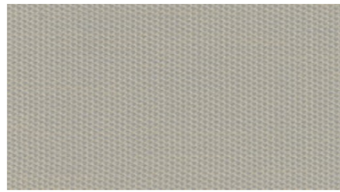
5054



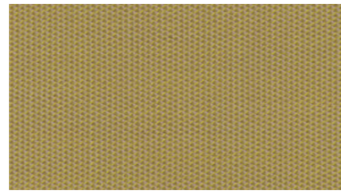
5852



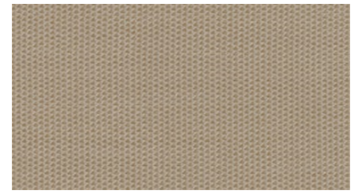
6471



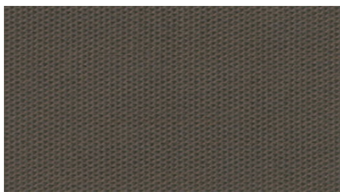
6530



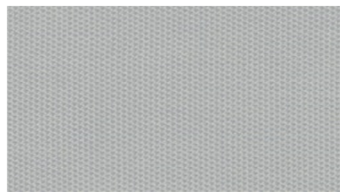
6543



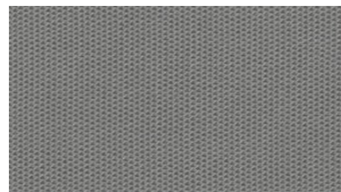
6730



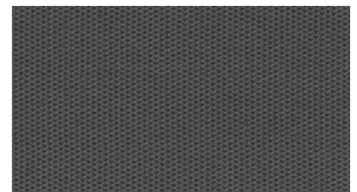
6780



8330



8660



8880

## NODE

### Upholstery fabrics

**Designer:** Pernilla McGillivray  
**Bredd:** 140 cm  
**Vikt:** 340 g/m<sup>2</sup>  
**Material:** Ull 85%  
 Polyamid 15%

**Färghärdighet:**  
 Mot gnidning torr enligt EN ISO 105-X12:  
 - ≥4 (Skala 1-5)  
 Mot ljus enligt EN ISO 105-B02  
 - ≥5-7 (Skala 1-8)  
 Mot gnidning våt enligt EN ISO 105-X12:  
 - ≥3-4 (Skala 1-5)

**Nötning:**  
 Martindale (Enligt EN ISO 12947-2):  
 - 100000 varv

**Svårantändlighet:**  
 - BS 5852, Crib 5  
 - IMO FTP Code Part 8

#### Skötselansvisning:



#### Certifikat:



#### For further information:

Svensson  
 511 82 Kinna, Sweden

T: +46 320 20 92 00  
 F: +46 320 21 10 10  
 E: info@ludvigsvensson.com

