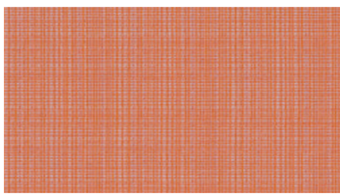
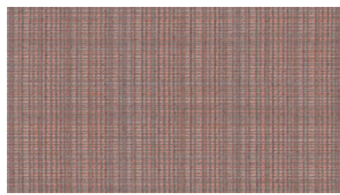




INK
Upholstery fabrics



3216



3252



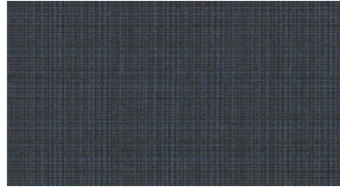
3360



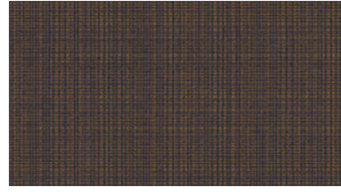
3421



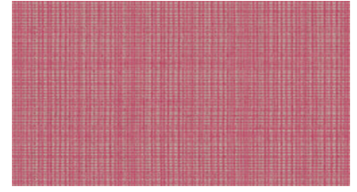
3462



3672



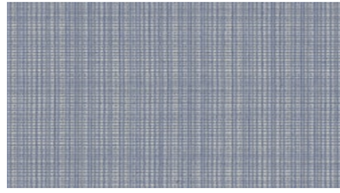
3681



3725



3780



4323



4326



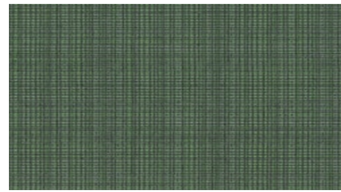
4345



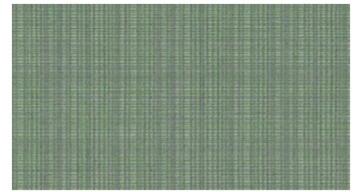
4562



5043



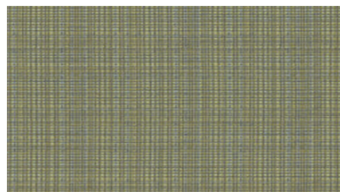
5744



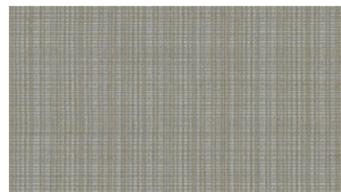
5824



6416



6424



6641



6915

INK

Upholstery fabrics

Bredd: 140 cm
Vikt: 330 g/m²
Material: Ull 85%
 Polyamid 15%

Färghärdighet:
Mot gnidning torr enligt EN ISO 105-X12:
 - ≥4 (Skala 1-5)
Mot ljus enligt EN ISO 105-B02
 - 5-7 (Skala 1-8)
Mot gnidning våt enligt EN ISO 105-X12:
 - 3-4 (Skala 1-5)

Nötning:
Martindale (Enligt EN ISO 12947-2):
 - 60000 varv

Svårantändlighet:
 - BS 5852 Crib 5
 - TB 117
 - IMO FTP Code Part 8 (IMO Res. A.652 (16))

Skötselansvisning:



For further information:

Svensson
 511 82 Kinna, Sweden

T: +46 320 20 92 00
 F: +46 320 21 10 10
 E: info@ludvigsvensson.com





8500

INK

Upholstery fabrics

Bredd: 140 cm
Vikt: 330 g/m²
Material: Ull 85%
Polyamid 15%

Färghärdighet:

Mot gnidning torr enligt EN ISO 105-X12:

- ≥4 (Skala 1-5)

Mot ljus enligt EN ISO 105-B02

- 5-7 (Skala 1-8)

Mot gnidning våt enligt EN ISO 105-X12:

- 3-4 (Skala 1-5)

Nötning:

Martindale (Enligt EN ISO 12947-2):

- 60000 varv

Svårantändlighet:

- BS 5852 Crib 5

- TB 117

- IMO FTP Code Part 8 (IMO Res.

A.652 (16)

Skötselansvisning:



For further information:

Svensson
511 82 Kinna, Sweden

T: +46 320 20 92 00

F: +46 320 21 10 10

E: info@ludvigsvensson.com

