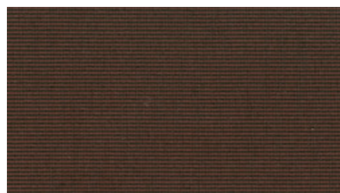




WELL
Hanging fabrics



8990



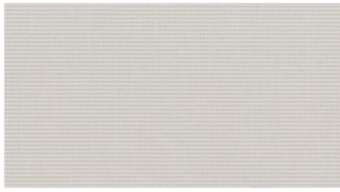
6980



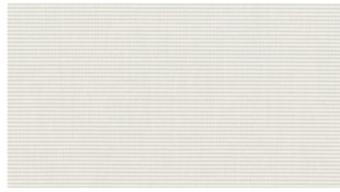
8977



8300



8022



8010



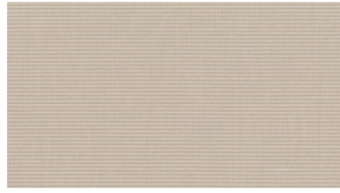
1700



1500



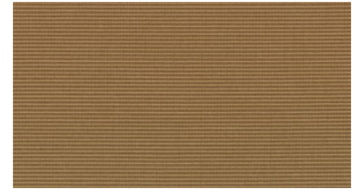
3020



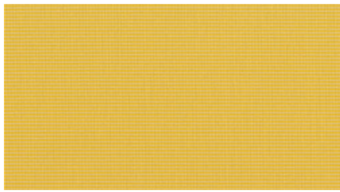
6730



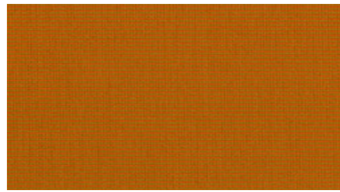
6780



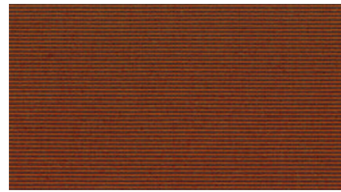
6880



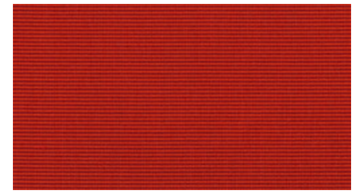
6630



6967



3360



3655



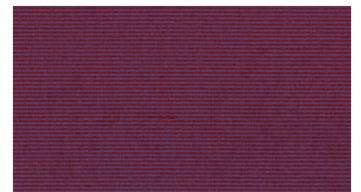
3740



3680



3560



3950

WELL

Hanging fabrics

Bredd: 150 cm

Vikt: 290 g/m²

Material: Trevira CS 100%

Krympning: 2 %

Färghårdighet:

Mot ljus enligt EN ISO 105-B02

- 5-7 (Skala 1-8)

Mot tvätt enligt EN ISO 105-C06

- 4-5 (Skala 1-5)

Svårantändlighet:

- IMO FTP Code Part 7 (IMO Res

A 471(12)IMO Re A 563 (14))

- EN 13773, Class 1

- NF P 92-503-507, M1

- SN 198898

- EN 13501-1

- UNI 8456/8457

- NFPA 701

Akustik:

Mätning av ljud absorption i efterklangs

rum: EN ISO 354:2003. Värdering

av mätresultat och klassindelning

enligt: EN ISO 11654:1997: w

= 0.85Klass B

Skötselansvisning:



For further information:

Svensson
511 82 Kinna, Sweden

T: +46 320 20 92 00

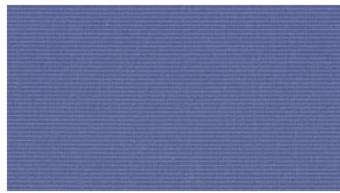
F: +46 320 21 10 10

E: info@ludvigsvensson.com

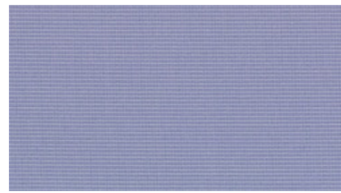




4150



4540



4434



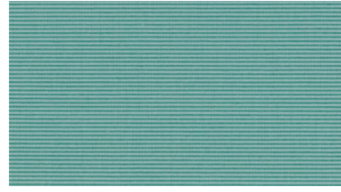
4656



4250



4980



4850



5120



5580



5860



6030

WELL

Hanging fabrics

Bredd: 150 cm

Vikt: 290 g/m²

Material: Trevira CS 100%

Krympning: 2 %

Färghårdighet:

Mot ljus enligt EN ISO 105-B02

- 5-7 (Skala 1-8)

Mot tvätt enligt EN ISO 105-C06

- 4-5 (Skala 1-5)

Svårantändlighet:

- IMO FTP Code Part 7 (IMO Res

A 471(12)IMO Re A 563 (14))

- EN 13773, Class 1

- NF P 92-503-507, M1

- SN 198898

- EN 13501-1

- UNI 8456/8457

- NFPA 701

Akustik:

Mätning av ljud absorption i efterklangs

rum: EN ISO 354:2003. Värdering

av mätresultat och klassindelning

enligt: EN ISO 11654:1997: w

= 0.85Klass B

Skötselansvisning:



For further information:

Svensson
511 82 Kinna, Sweden

T: +46 320 20 92 00

F: +46 320 21 10 10

E: info@ludvigsvensson.com

