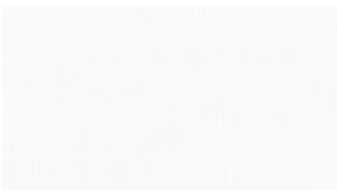


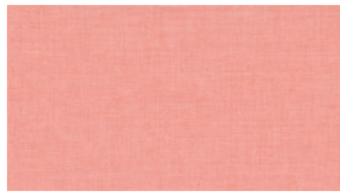


NOVA
Hanging fabrics

 **svensson**



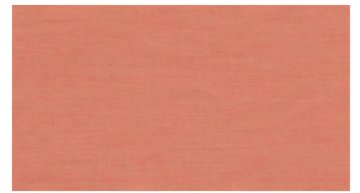
1500



3006



3206



3226



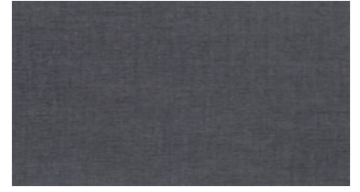
3331



3500



3962



4281



4323



4333



4370



4422



4453



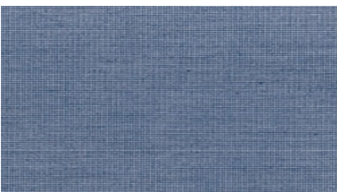
4461



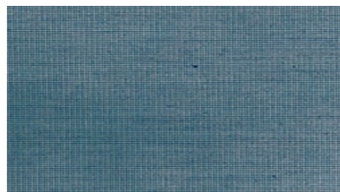
4463



4521



4547



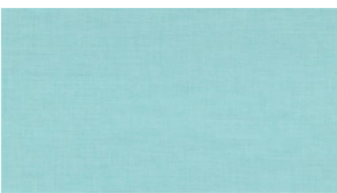
4844



4863



4945



5013



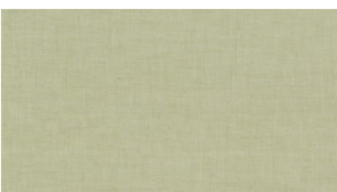
5211



5621



6212



6223



6252



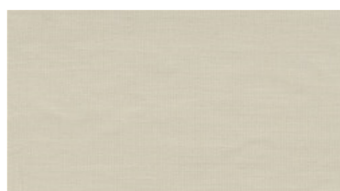
6501



6503



6522



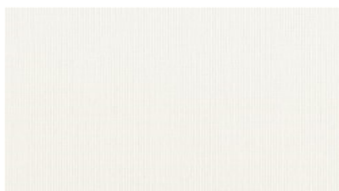
6620



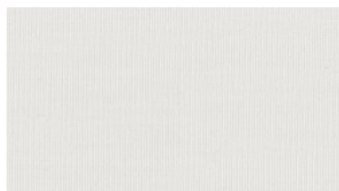
6650



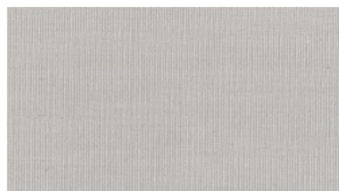
6782



8000



8030



8330



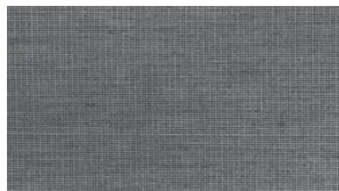
8340



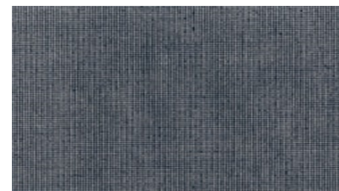
8440



8660



8700



8800



7788

NOVA

Hanging fabrics

Bredd: 300 cm

Vikt: 110 g/m²

Material: Trevira CS 100%

Krympning: 2 %

Färghärdighet:

Mot gnidning torr enligt EN ISO

105-X12:

- 4 (Skala 1-5)

Mot ljus enligt EN ISO 105-B02

- 5-7 (Skala 1-8)

Mot tvätt enligt EN ISO 105-C06

- 5 (Skala 1-5)

Mot gnidning våt enligt EN ISO

105-X12:

- 3 (Skala 1-5)

Svårantändlighet:

- BS 5867-2 Type B- DIN 4102-1

B1- IMO FTP Code 2010:

- DIN 4102-1 B1

- IMO FTP Code 2010: Part 7

- NF P 92-503-507, M1

- EN 13773, Class 1

- SN 198898

- UNI 8456 / 8457

- NFPA 701

- UNI 9177, 1(UNO)+Homologation

- EN 13501-1

For further information:

Svensson
511 82 Kinna, Sweden

T: +46 320 20 92 00

F: +46 320 21 10 10

E: info@ludvigsvensson.com



Skötselansvisning:

