



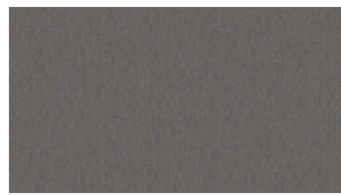
WOW RE
Upholstery fabrics



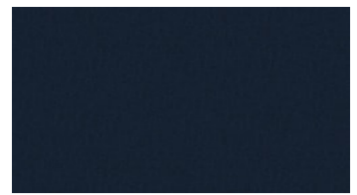
3036



3127



4441



4454



4543



5231



6021



6072



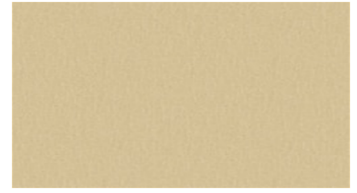
6281



6344



6416



6511



6622



6651



6661



6722



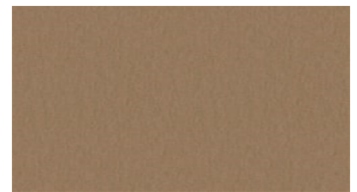
6744



6754



6763



6931

WOW RE Upholstery fabrics

Design by: Pernilla McGillivray
Width: 140 cm
Weight: 500 g/m²
Material: Recycled Trevira CS 73%
Trevira CS 27%
Shrinkage: 2 %

Color fastness:
Against dry rubbing according to
EN ISO 105-X12:
- ≥ 4 (Scale 1-5)
Against light according to EN ISO
105-B02
- ≥ 5 - 7 (Scale 1-8)
Against wet rubbing according to
EN ISO 105-X12:
- ≥ 3-4 (Scale 1-5)

Abrasion resistance:
Martindale (According to EN ISO
12947-2):
- 40000 rubs

Flame retardancy:
- EN 1021-1&2 - DIN 4102-1
B1- BS 5852 Crib 5- EN 13501-1;
B-s1, d0- NFP 92-503-507 M1- IMO
FTP Code 2010:
- DIN 4102-1 B1
- BS 5852 Crib 5
- EN 13501-1; B-s1, d0
- NFP 92-503-507 M1
- IMO FTP Code 2010: Part 8

Care instructions:



Certificates:



For further information:

Svensson
511 82 Kinna, Sweden

T: +46 320 20 92 00
F: +46 320 21 10 10
E: info@ludvigsvensson.com

