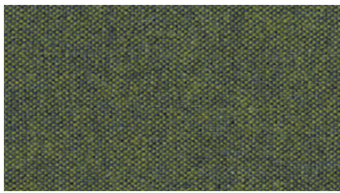
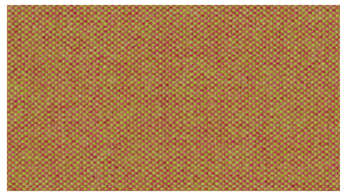


STEP
Upholstery fabrics



150



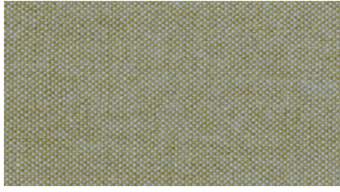
186



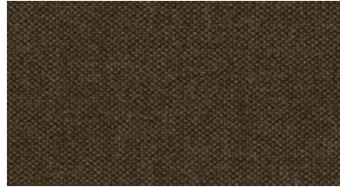
222



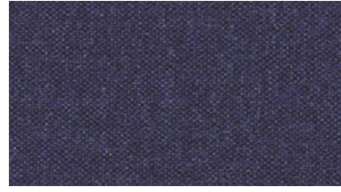
240



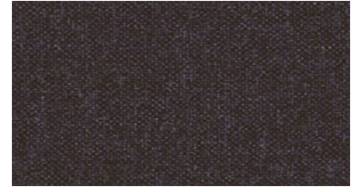
260



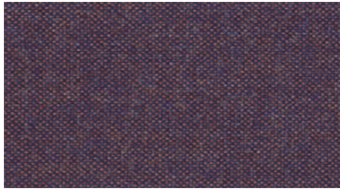
290



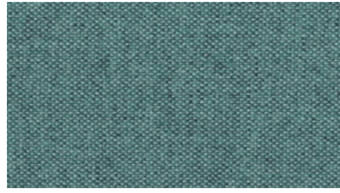
550



559



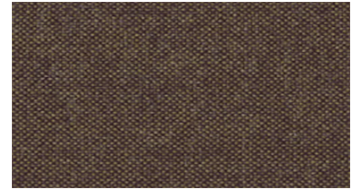
570



609



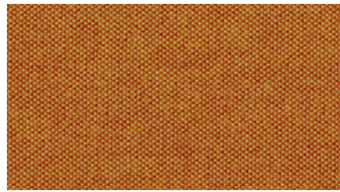
650



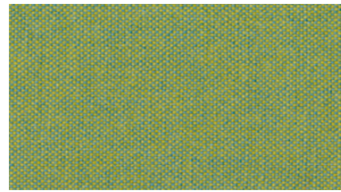
670



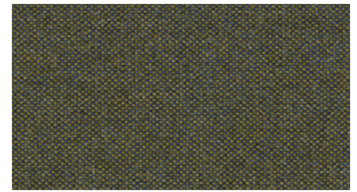
690



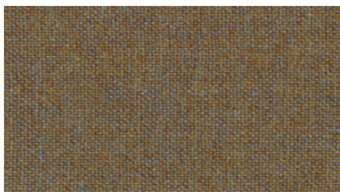
708



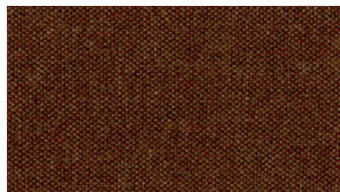
711



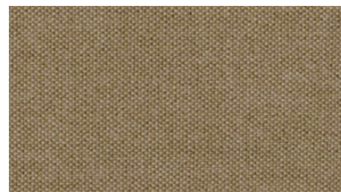
750



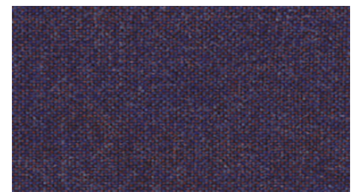
760



789



811



850

STEP Upholstery fabrics

Width: 140 cm
Weight: 410 g/m²
Material: Wool 75%
Viscose 25%

Color fastness:
Against dry rubbing according to EN ISO 105-X12:
- 4-5 (Scale 1-5)
Against light according to EN ISO 105-B02
- 5-7 (Scale 1-8)
Against wet rubbing according to EN ISO 105-X12:
- 3-4 (Scale 1-5)

Abrasion resistance:
Martindale (According to EN ISO 12947-2):
- 50000 rubs

Flame retardancy:
- BS 5852, Crib 5
- TB 117
- IMO FTP Code Part 8 (IMO Res. A.652 (16)
- UNI 9175, 1 IM

Care instructions:



For further information:

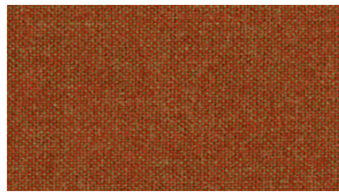
Svensson
511 82 Kinna, Sweden

T: +46 320 20 92 00
F: +46 320 21 10 10
E: info@ludvigsvensson.com

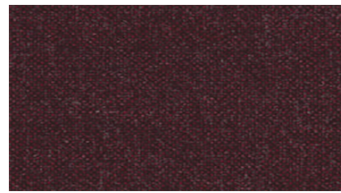




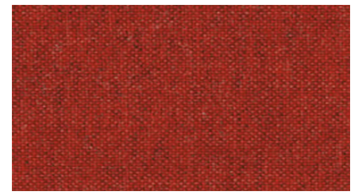
860



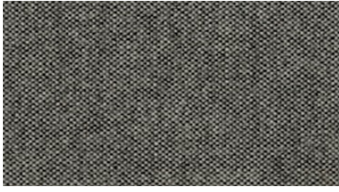
870



886



888



900



990

STEP Upholstery fabrics

Width: 140 cm
Weight: 410 g/m²
Material: Wool 75%
Viscose 25%

Color fastness:
Against dry rubbing according to EN ISO 105-X12:
- 4-5 (Scale 1-5)
Against light according to EN ISO 105-B02
- 5-7 (Scale 1-8)
Against wet rubbing according to EN ISO 105-X12:
- 3-4 (Scale 1-5)

Abrasion resistance:
Martindale (According to EN ISO 12947-2):
- 50000 rubs

Flame retardancy:
- BS 5852, Crib 5
- TB 117
- IMO FTP Code Part 8 (IMO Res. A.652 (16)
- UNI 9175, 1 IM

Care instructions:



For further information:

Svensson
511 82 Kinna, Sweden

T: +46 320 20 92 00
F: +46 320 21 10 10
E: info@ludvigsvensson.com

