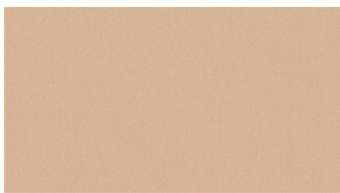




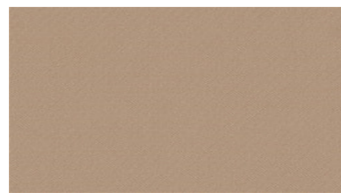
**BLUSH**  
Hanging fabrics



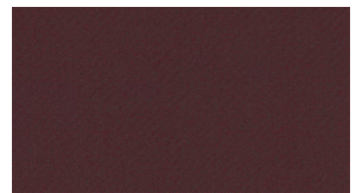
3021



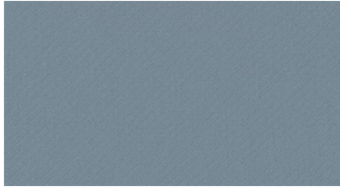
3235



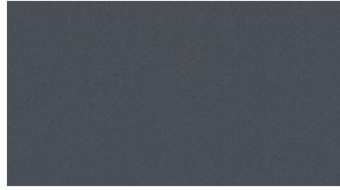
3241



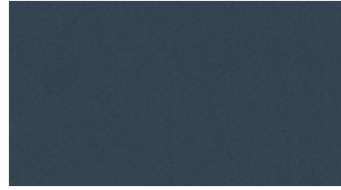
3872



4442



4471



4562



5431



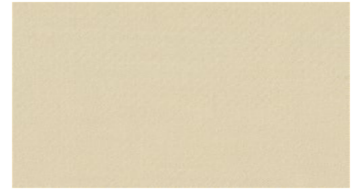
5472



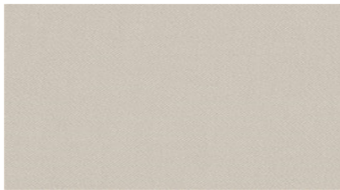
6232



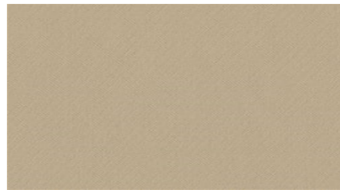
6252



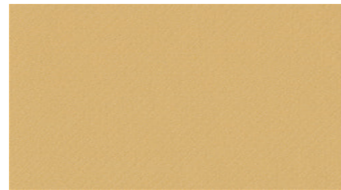
6311



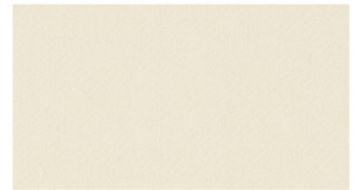
6510



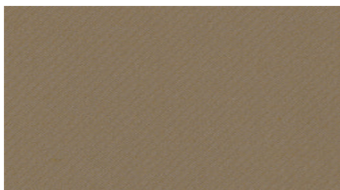
6531



6623



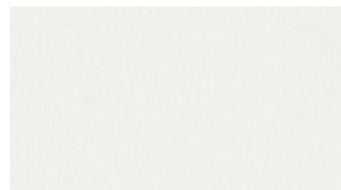
6700



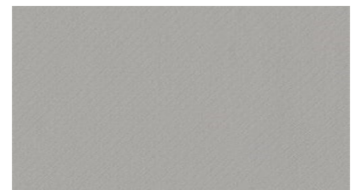
6752



6943



8000



8220

## BLUSH

### Hanging fabrics

**Width:** 300 cm

**Weight:** 320 g/m<sup>2</sup>

**Material:** Trevira CS 100%

**Shrinkage:** 2 %

**Color fastness:**

Against light according to EN ISO 105-B02

- ≥ 5-7 (Scale 1-8)

Against washing according to EN ISO 105-C06

- ≥ 5 (Scale 1-5)

**Flame retardancy:**

- BS 5867-2 Type B - DIN 4102 B1-

IMO FTP Code 2010:

- DIN 4102 B1

- IMO FTP Code 2010: Part 7

- NFP 92-503-507, M1

- EN 13773, Class 1

- EN 13501-1; B-s1, d0

- NFPA 701

- UNI 8456 / 8457

- SN 198898

**Acoustics:**

Measurement of sound absorption in a reverberation room: EN ISO 354:2003. Ratio of sound absorption EN ISO 11654:1997: w = 0,90(H), Class A

**Care instructions:**



**For further information:**

Svensson  
511 82 Kinna, Sweden

T: +46 320 20 92 00

F: +46 320 21 10 10

E: info@ludvigsvensson.com

