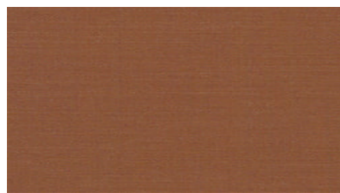




**CODY**  
Upholstery fabrics



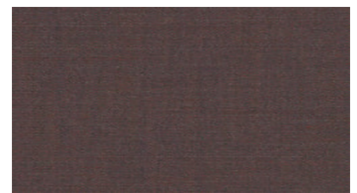
3226



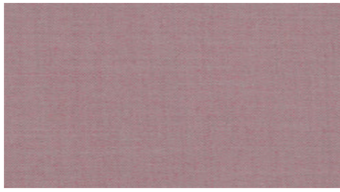
3334



3350



3572



3633



4152



4380



4462



4522



4831



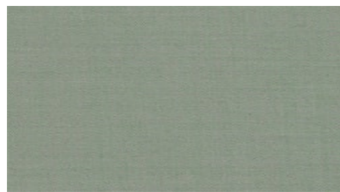
4862



5251



5261



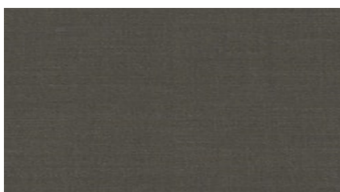
5731



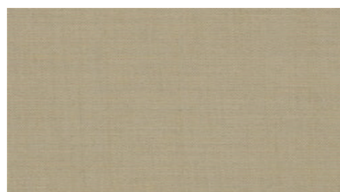
5870



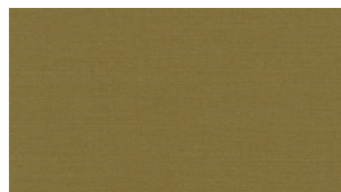
5934



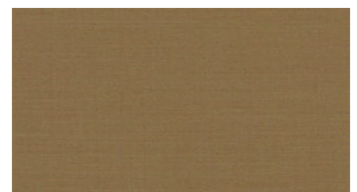
6360



6422



6443



6453

## CODY

### Upholstery fabrics

**Width:** 140 cm  
**Weight:** 280 g/m<sup>2</sup>  
**Material:** Wool 85%  
 Polyamid 15%

**Color fastness:**  
*Against dry rubbing according to EN ISO 105-X12:*  
 - ≥ 4 (Scale 1-5)  
*Against light according to EN ISO 105-B02*  
 - ≥ 5-7 (Scale 1-8)  
*Against wet rubbing according to EN ISO 105-X12:*  
 - ≥ 3-4 (Scale 1-5)

**Abrasion resistance:**  
*Martindale (According to EN ISO 12947-2):*  
 - 100000 rubs

**Flame retardancy:**  
 - EN ISO 1021 part 1, 2- BS 5852, Crib 5- IMO FTP Code 2010:  
 - BS 5852, Crib 5  
 - IMO FTP Code 2010: Part 8

#### Care instructions:



#### For further information:

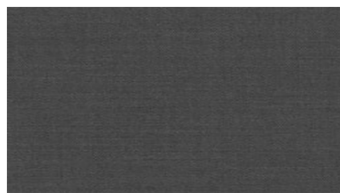
Svensson  
 511 82 Kinna, Sweden

T: +46 320 20 92 00  
 F: +46 320 21 10 10  
 E: info@ludvigsvensson.com





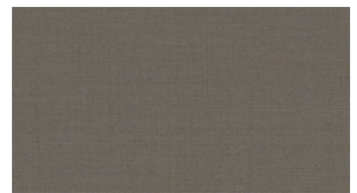
6520



6560



6740



6750



6770



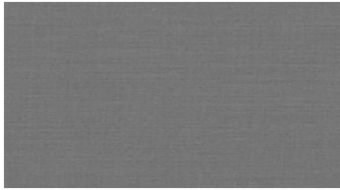
6820



6826



6841



8400



8800

## CODY Upholstery fabrics

**Width:** 140 cm

**Weight:** 280 g/m<sup>2</sup>

**Material:** Wool 85%  
Polyamid 15%

**Color fastness:**

Against dry rubbing according to  
EN ISO 105-X12:  
- ≥ 4 (Scale 1-5)

Against light according to EN ISO  
105-B02

- ≥ 5-7 (Scale 1-8)

Against wet rubbing according to  
EN ISO 105-X12:

- ≥ 3-4 (Scale 1-5)

**Abrasion resistance:**

Martindale (According to EN ISO  
12947-2):

- 100000 rubs

**Flame retardancy:**

- EN ISO 1021 part 1, 2- BS 5852,  
Crib 5- IMO FTP Code 2010:

- BS 5852, Crib 5

- IMO FTP Code 2010: Part 8

**Care instructions:**



**For further information:**

Svensson  
511 82 Kinna, Sweden

T: +46 320 20 92 00

F: +46 320 21 10 10

E: info@ludvigsvensson.com

