

MACRO
Upholstery fabrics

 **svensson**



3023



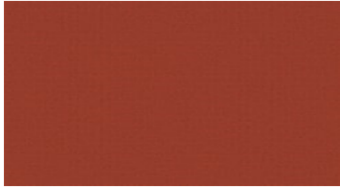
3142



3154



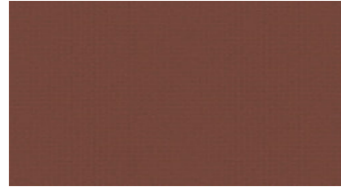
3221



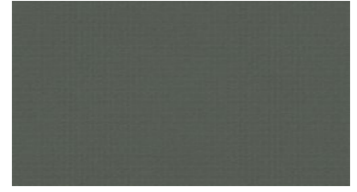
3436



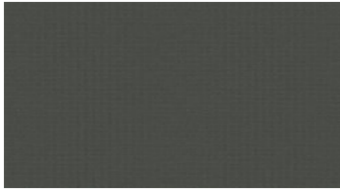
3527



3554



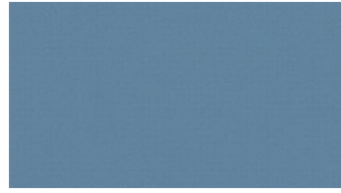
3560



3570



4425



4433



4445



4453



4531



4536



4552



4580



4653



4661



4730

MACRO Upholstery fabrics

Width: 140 cm

Weight: 335 g/m²

Material: Wool 85%
Polyamid 15%

Color fastness:

Against dry rubbing according to EN ISO 105-X12:
- ≥4 (Scale 1-5)

Against light according to EN ISO 105-B02

- ≥5-7 (Scale 1-8)

Against wet rubbing according to EN ISO 105-X12:

- ≥3-4 (Scale 1-5)

Abrasion resistance:

Martindale (According to EN ISO 12947-2):

- 100000 rubs

Flame retardancy:

- IMO FTP Code Part 8

- UNI 9175, 1IM

For further information:

Svensson
511 82 Kinna, Sweden

T: +46 320 20 92 00

F: +46 320 21 10 10

E: info@ludvigsvensson.com





4861



4863



5730



5863



5871



5881



5932



6062



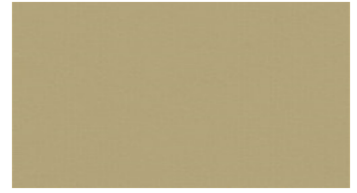
6133



6322



6424



6621



6631



6644



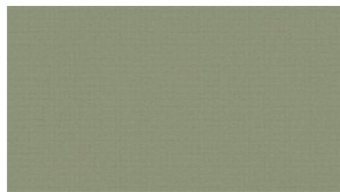
6662



6744



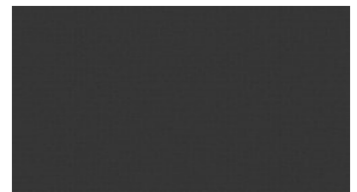
6841



8330



8440



8900

MACRO Upholstery fabrics

Width: 140 cm

Weight: 335 g/m²

Material: Wool 85%
Polyamid 15%

Color fastness:

Against dry rubbing according to
EN ISO 105-X12:
- ≥4 (Scale 1-5)

Against light according to EN ISO
105-B02

- ≥5-7 (Scale 1-8)

Against wet rubbing according to
EN ISO 105-X12:

- ≥3-4 (Scale 1-5)

Abrasion resistance:

Martindale (According to EN ISO
12947-2):

- 100000 rubs

Flame retardancy:

- IMO FTP Code Part 8

- UNI 9175, 1IM

For further information:

Svensson
511 82 Kinna, Sweden

T: +46 320 20 92 00

F: +46 320 21 10 10

E: info@ludvigsvensson.com

