

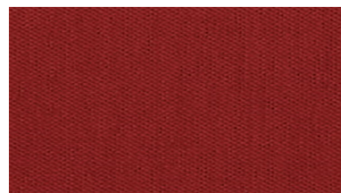
MINGEL
Upholstery fabrics



3026



3071



3634



3254



3380



3444



3645



4271



4345



4443



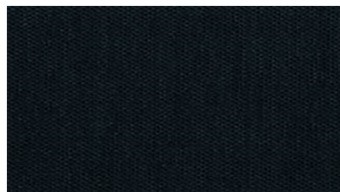
4461



4531



4532



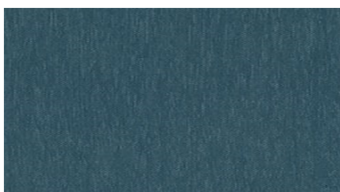
4552



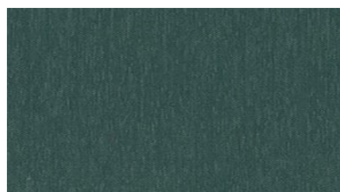
5041



5350



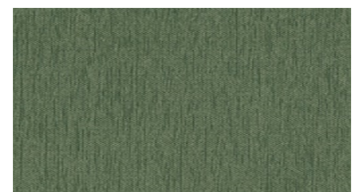
5370



5461



5770



5852

MINGEL Upholstery fabrics

Width: 140 cm

Weight: 450 g/m²

Material: Trevira CS 100%

Shrinkage: 2 %

Color fastness:

Against dry rubbing according to EN ISO 105-X12:
- 4 (Scale 1-5)

Against light according to EN ISO 105-B02

- 5-7 (Scale 1-8)

Against wet rubbing according to EN ISO 105-X12:

- 3-4 (Scale 1-5)

Abrasion resistance:

Martindale (According to EN ISO 12947-2):

- 50000 rubs

Flame retardancy:

- EN ISO 1021 1, 2- DIN 4102-1 B1- BS 5852 crib 5- UNI 9175, 1 IM- TB 117- IMO FTP Code 2010:

- DIN 4102-1 B1

- BS 5852 crib 5

- UNI 9175, 1 IM

- TB 117

- IMO FTP Code 2010: Part 8

- NFPA 260

- EN 45545-2, R21 HL1/HL2 (2013

+ A1 2015)

- EN 45545-2, R21 HL1 /HL2 (2020)

Care instructions:



For further information:

Svensson
511 82 Kinna, Sweden

T: +46 320 20 92 00

F: +46 320 21 10 10

E: info@ludvigsvensson.com





6044



6560



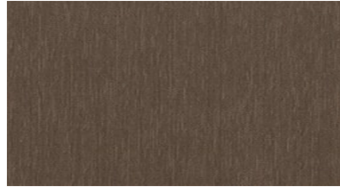
6613



6661



6852



6871



6963



8220



8400



8770

MINGEL Upholstery fabrics

Width: 140 cm
Weight: 450 g/m²
Material: Trevira CS 100%
Shrinkage: 2 %

Color fastness:
Against dry rubbing according to EN ISO 105-X12:
- 4 (Scale 1-5)
Against light according to EN ISO 105-B02
- 5-7 (Scale 1-8)
Against wet rubbing according to EN ISO 105-X12:
- 3-4 (Scale 1-5)

Abrasion resistance:
Martindale (According to EN ISO 12947-2):
- 50000 rubs

Flame retardancy:
- EN ISO 1021 1, 2- DIN 4102-1 B1- BS 5852 crib 5- UNI 9175, 1 IM- TB 117- IMO FTP Code 2010:
- DIN 4102-1 B1
- BS 5852 crib 5
- UNI 9175, 1 IM
- TB 117
- IMO FTP Code 2010: Part 8
- NFPA 260
- EN 45545-2, R21 HL1/HL2 (2013 + A1 2015)
- EN 45545-2, R21 HL1 /HL2 (2020)

Care instructions:



For further information:

Svensson
511 82 Kinna, Sweden

T: +46 320 20 92 00
F: +46 320 21 10 10
E: info@ludvigsvensson.com

