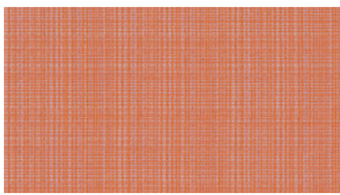
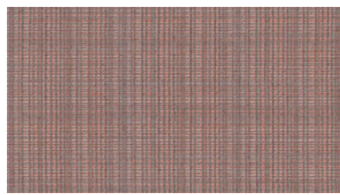


INK
Upholstery fabrics



3216



3252



3360



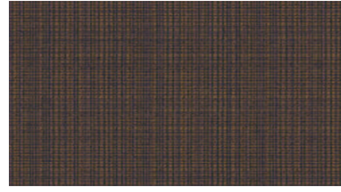
3421



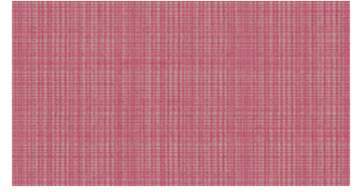
3462



3672



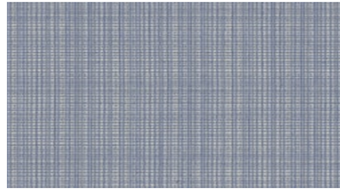
3681



3725



3780



4323



4326



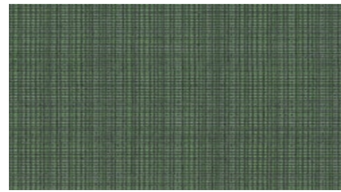
4345



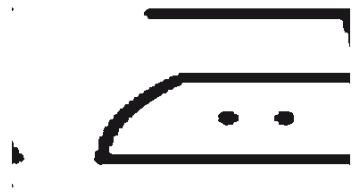
4562



5043



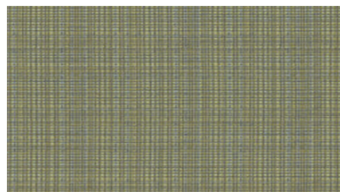
5744



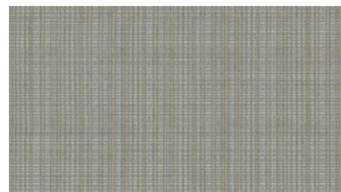
5824



6416



6424



6641



6915

INK Upholstery fabrics

Width: 140 cm

Weight: 330 g/m²

Material: Wool 85%
Polyamid 15%

Color fastness:

Against dry rubbing according to
EN ISO 105-X12:
- ≥4 (Scale 1-5)

Against light according to EN ISO
105-B02

- 5-7 (Scale 1-8)

Against wet rubbing according to
EN ISO 105-X12:

- 3-4 (Scale 1-5)

Abrasion resistance:

Martindale (According to EN ISO
12947-2):

- 60000 rubs

Flame retardancy:

- BS 5852 Crib 5

- TB 117

- IMO FTP Code Part 8 (IMO Res.
A.652 (16))

Care instructions:



For further information:

Svensson
511 82 Kinna, Sweden

T: +46 320 20 92 00

F: +46 320 21 10 10

E: info@ludvigsvensson.com





8500

INK

Upholstery fabrics

Width: 140 cm
Weight: 330 g/m²
Material: Wool 85%
Polyamid 15%

Color fastness:
Against dry rubbing according to EN ISO 105-X12:
- ≥4 (Scale 1-5)
Against light according to EN ISO 105-B02
- 5-7 (Scale 1-8)
Against wet rubbing according to EN ISO 105-X12:
- 3-4 (Scale 1-5)

Abrasion resistance:
Martindale (According to EN ISO 12947-2):
- 60000 rubs

Flame retardancy:
- BS 5852 Crib 5
- TB 117
- IMO FTP Code Part 8 (IMO Res. A.652 (16))

Care instructions:



For further information:

Svensson
511 82 Kinna, Sweden

T: +46 320 20 92 00
F: +46 320 21 10 10
E: info@ludvigsvensson.com

