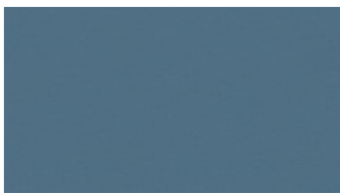
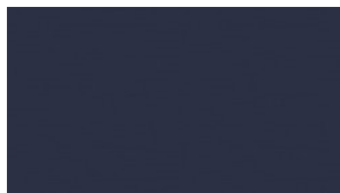




EASY
Upholstery fabrics



4342



4380



4345



4454



4625



4642



4745



4831



5026



5936



5863



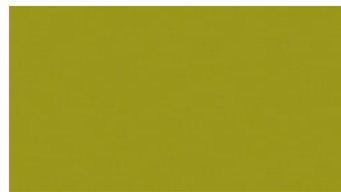
6054



6036



6165



6636



6553



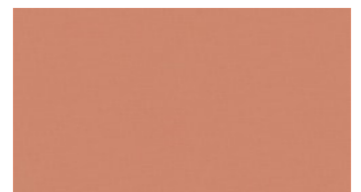
6727



6918



3027



3124

EASY

Upholstery fabrics

Width: 140 cm
Weight: 330 g/m²
Material: Wool 85%
 Polyamid 15%

Color fastness:
 Against dry rubbing according to
 EN ISO 105-X12:
 - 4 (Scale 1-5)
 Against light according to EN ISO
 105-B02
 - 5-7 (Scale 1-8)
 Against wet rubbing according to
 EN ISO 105-X12:
 - 3-4 (Scale 1-5)

Abrasion resistance:
 Martindale (According to EN ISO
 12947-2):
 - 150000 rubs

Flame retardancy:
 - EN ISO 1021 part 1, 2- BS 5852
 crib 5- IMO FTP Code 2010:
 - BS 5852 crib 5
 - IMO FTP Code 2010: Part 8
 - UNI 9175, 1 IM
 - TB117

Care instructions:



For further information:

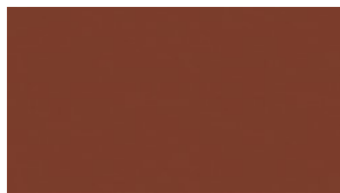
Svensson
 511 82 Kinna, Sweden

T: +46 320 20 92 00
 F: +46 320 21 10 10
 E: info@ludvigsvensson.com

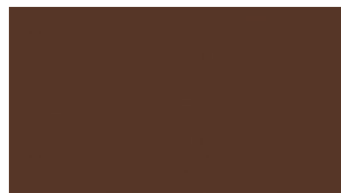




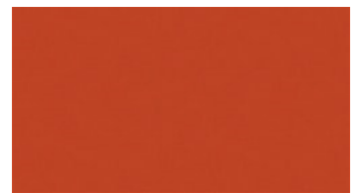
3022



3145



3263



3318



3536



3726



3772



3622



3651



6810



3030



3070



8700



8500



6370



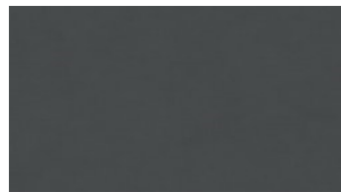
6331



4861



8200



6380



8900

EASY

Upholstery fabrics

Width: 140 cm

Weight: 330 g/m²

Material: Wool 85%
Polyamid 15%

Color fastness:

Against dry rubbing according to
EN ISO 105-X12:
- 4 (Scale 1-5)

Against light according to EN ISO
105-B02

- 5-7 (Scale 1-8)

Against wet rubbing according to
EN ISO 105-X12:

- 3-4 (Scale 1-5)

Abrasion resistance:

Martindale (According to EN ISO
12947-2):

- 150000 rubs

Flame retardancy:

- EN ISO 1021 part 1, 2- BS 5852
crib 5- IMO FTP Code 2010:

- BS 5852 crib 5

- IMO FTP Code 2010: Part 8

- UNI 9175, 1 IM

- TB117

Care instructions:



For further information:

Svensson
511 82 Kinna, Sweden

T: +46 320 20 92 00

F: +46 320 21 10 10

E: info@ludvigsvensson.com

