



SAWA
Hanging fabrics



5840



6340



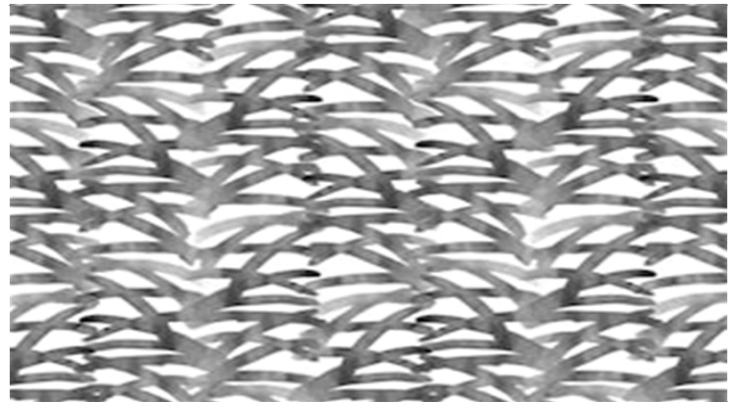
6740



3045



4345



4440

SAWA Hanging fabrics

Width: 150 cm

Weight: 360 g/m²

Material: Trevira CS 100%

Shrinkage: 2 %

Color fastness:

Against dry rubbing according to

EN ISO 105-X12:

- 4 (Scale 1-5)

Against light according to EN ISO 105-B02

- 5-7 (Scale 1-8)

Against washing according to EN ISO 105-C06

- 5 (Scale 1-5)

Against wet rubbing according to EN ISO 105-X12:

- 3 (Scale 1-5)

Flame retardancy:

- BS 5867:

- DIN 4102-1 class B1

- IMO FTP Code 2010: Part 7

- EN 13773, class 1

- EN 13501-1, Bs-1, d0

- NFP 92-503-507, M1

- NFPA 701

- UNI 8456 / 8457

Acoustics:

Measurement of sound absorption

in a reverberation room: EN ISO

354:2003. Ration of sound absorption

EN ISO 11654:1997: w = 0,35, Class

D The measured fabric is Prime,

on which Sawa is printed.

Care instructions:



For further information:

Svensson

511 82 Kinna, Sweden

T: +46 320 20 92 00

F: +46 320 21 10 10

E: info@ludvigsvensson.com

