



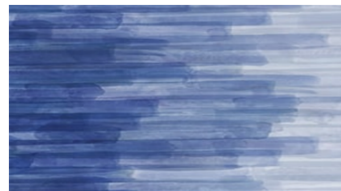
KIRI
Hanging fabrics



6146



5027



4355



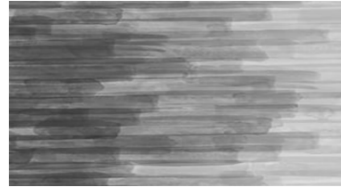
3538



3228



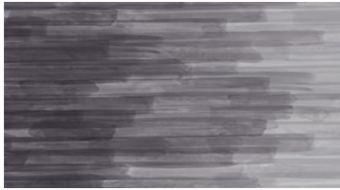
6646



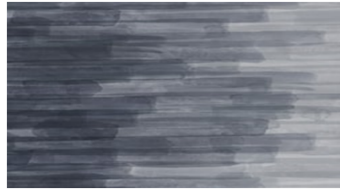
8700



4881



4181



4481

KIRI Hanging fabrics

Width: 150 cm

Weight: 90 g/m²

Material: Trevira CS 100%

Shrinkage: 2 %

Color fastness:

Against dry rubbing according to

EN ISO 105-X12:

- 4 (Scale 1-5)

Against light according to EN ISO 105-B02

- 5-7 (Scale 1-8)

Against washing according to EN ISO 105-C06

- 4-5 (Scale 1-5)

Against wet rubbing according to EN ISO 105-X12:

- 3 (Scale 1-5)

Flame retardancy:

- BS 5867, Part 2- DIN 4102 B1-
EN 13773, Class 1- IMO FTP Code
2010:

- DIN 4102 B1

- EN 13773, Class 1

- IMO FTP Code 2010: Part 7

- NFP 92-503-507, M1

- EN 13501-1, B-s1, d0

- UNI 8456 / 8457

- NFPA 701

Acoustics:

Measurement of sound absorption
in a reverberation room: EN ISO
354:2003 Ration of sound absorption
EN ISO 11654:1997: w = 0,15, Class
E The measured fabric is Mint,
on which Kiri is printed.

Care instructions:



For further information:

Svensson
511 82 Kinna, Sweden

T: +46 320 20 92 00

F: +46 320 21 10 10

E: info@ludvigsvensson.com

