



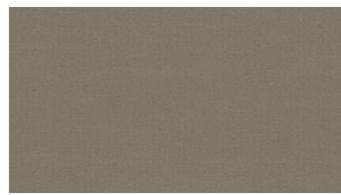
RAMI
Upholstery fabrics



3022



3027



3030



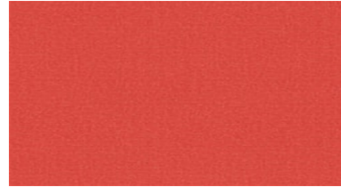
3072



3124



3145



3318



3536



3622



3651



3726



3863



4342



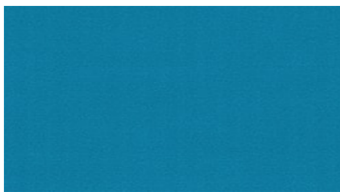
4345



4380



4454



4625



4642



4745



4831

RAMI Upholstery fabrics

Design by: Eva Larsson
Width: 140 cm
Weight: 600 g/m²
Material: Wool 80%
Rami 20%

Color fastness:
Against dry rubbing according to EN ISO 105-X12:
- 4 (Scale 1-5)
Against light according to EN ISO 105-B02
- 5-7 (Scale 1-8)
Against wet rubbing according to EN ISO 105-X12:
- 3-4 (Scale 1-5)

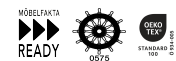
Abrasion resistance:
Martindale (According to EN ISO 12947-2):
- 70000 rubs

Flame retardancy:
- BS 5852 crib 5
- UNI 9175, 1 IM
- TB 117 IMO FTP Code Part 8 (IMO Res.A.652 (16))

Care instructions:



Certificates:

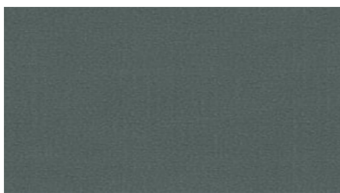


For further information:

Svensson
511 82 Kinna, Sweden

T: +46 320 20 92 00
F: +46 320 21 10 10
E: info@ludvigsvensson.com





4861



5028



5872



5936



6054



6072



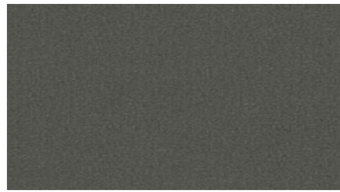
6165



6331



6336



6370



6380



6636



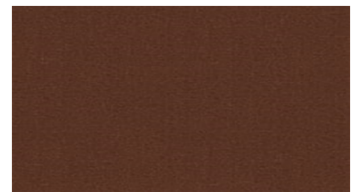
6727



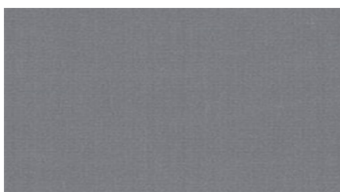
6810



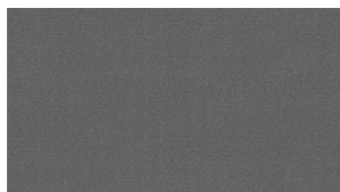
6918



6972



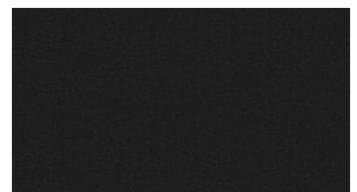
8200



8500



8700



8900

RAMI Upholstery fabrics

Design by: Eva Larsson

Width: 140 cm

Weight: 600 g/m²

Material: Wool 80%
Rami 20%

Color fastness:

Against dry rubbing according to
EN ISO 105-X12:

- 4 (Scale 1-5)

Against light according to EN ISO
105-B02

- 5-7 (Scale 1-8)

Against wet rubbing according to
EN ISO 105-X12:

- 3-4 (Scale 1-5)

Abrasion resistance:

Martindale (According to EN ISO
12947-2):

- 70000 rubs

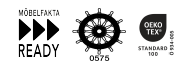
Flame retardancy:

- BS 5852 crib 5
- UNI 9175, 1 IM
- TB 117 IMO FTP Code Part 8 (IMO
Res.A.652 (16))

Care instructions:



Certificates:



For further information:

Svensson
511 82 Kinna, Sweden

T: +46 320 20 92 00

F: +46 320 21 10 10

E: info@ludvigsvensson.com

