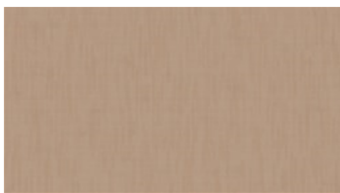
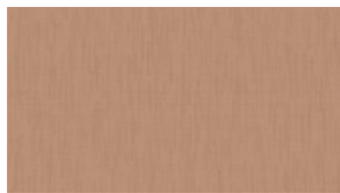




JOLLY RE
Upholstery fabrics



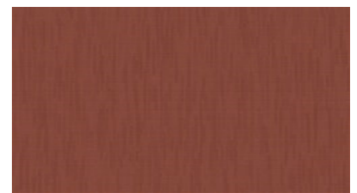
3031



3132



3236



3245



3327



3518



3872



4370



4433



4454



4544



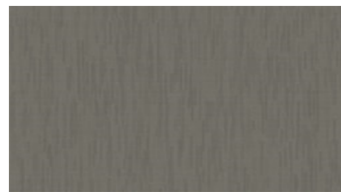
5221



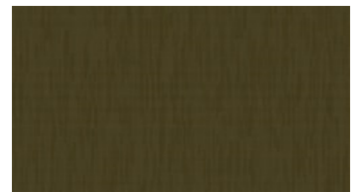
5852



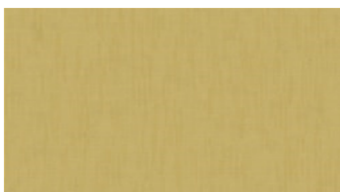
6133



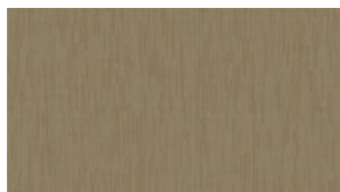
6231



6272



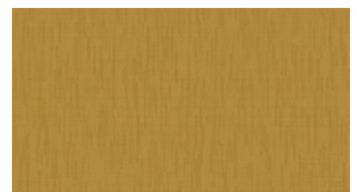
6424



6542



6621



6635

JOLLY RE

Upholstery fabrics

Breite: 140 cm

Gewicht: 330 G/M²

Material: Recycled Trevira CS 72%
Polyester 28%

Einlaufen: 2 %

Color fastness:

Against dry rubbing according to
EN ISO 105-X12:

- ≥ 4 (Scale 1-5)

Gegen Licht nach EN ISO 105-B02

- ≥ 5 - 7 (Skala 1-8)

Against wet rubbing according to
EN ISO 105-X12:

- ≥ 3-4 (Scale 1-5)

Scheuerfestigkeit:

Martindale (Nach: EN ISO 12947-2):

- 40000 Touren

Schwerentflammbarkeit:

- EN 1021-1&2 - DIN 4102-1

B1- BS 5852 Crib 5- EN 13501-1;

B-s1, d0- NFP 92-503-507 M1- IMO

FTP Code 2010:

- DIN 4102-1 B1

- BS 5852 Crib 5

- EN 13501-1; B-s1, d0

- NFP 92-503-507 M1

- IMO FTP Code 2010: Part 8

Wartungsanweisungen:



For further information:

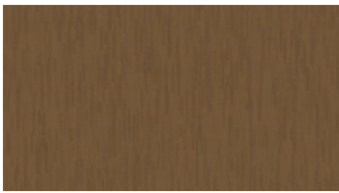
Svensson
511 82 Kinna, Sweden

T: +46 320 20 92 00

F: +46 320 21 10 10

E: info@ludvigsvensson.com





6754



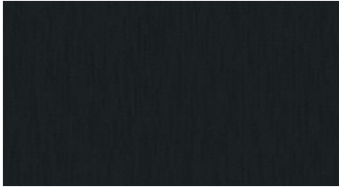
6931



8110



8330



8900

JOLLY RE

Upholstery fabrics

Breite: 140 cm
Gewicht: 330 G/M²
Material: Recycled Trevira CS 72%
 Polyester 28%
Einlaufen: 2 %
Color fastness:
Against dry rubbing according to EN ISO 105-X12:
 - ≥ 4 (Scale 1-5)
Gegen Licht nach EN ISO 105-B02
 - ≥ 5 - 7 (Skala 1-8)
Against wet rubbing according to EN ISO 105-X12:
 - ≥ 3-4 (Scale 1-5)

Scheuerfestigkeit:
Martindale (Nach: EN ISO 12947-2):
 - 40000 Touren

Schwerentflammbarkeit:
 - EN 1021-1&2 - DIN 4102-1
 B1- BS 5852 Crib 5- EN 13501-1;
 B-s1, d0- NFP 92-503-507 M1- IMO
FTP Code 2010:
 - DIN 4102-1 B1
 - BS 5852 Crib 5
 - EN 13501-1; B-s1, d0
 - NFP 92-503-507 M1
 - IMO FTP Code 2010: Part 8

Wartungsanweisungen:



For further information:

Svensson
 511 82 Kinna, Sweden

T: +46 320 20 92 00
 F: +46 320 21 10 10
 E: info@ludvigsvensson.com

