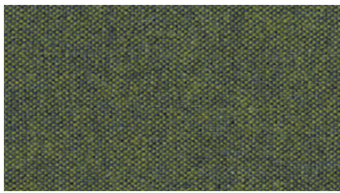
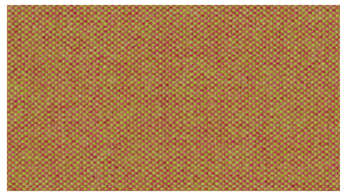


**STEP**  
Upholstery fabrics



150



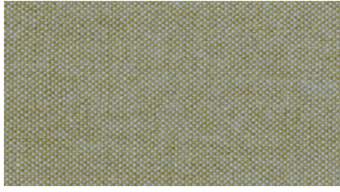
186



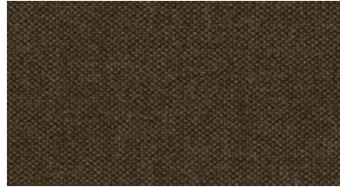
222



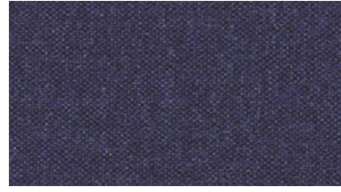
240



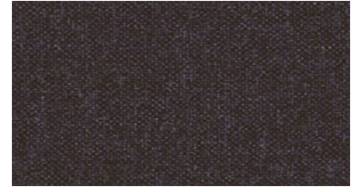
260



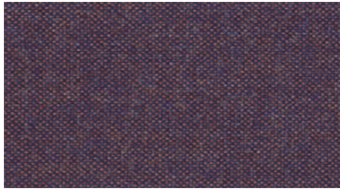
290



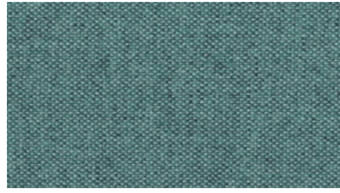
550



559



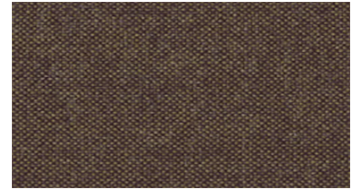
570



609



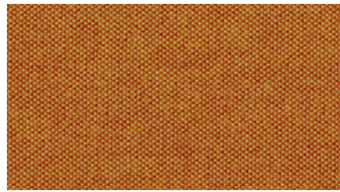
650



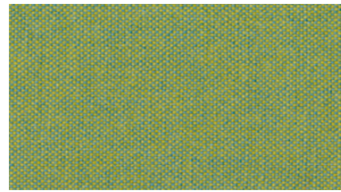
670



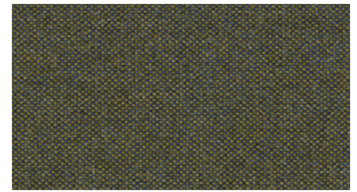
690



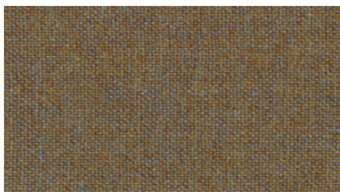
708



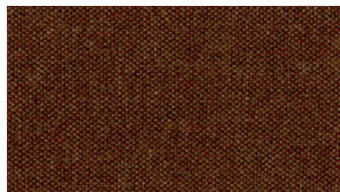
711



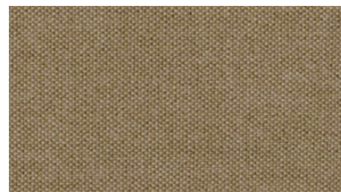
750



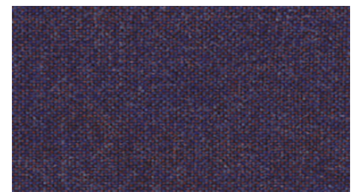
760



789



811



850

## STEP Upholstery fabrics

**Breite:** 140 cm  
**Gewicht:** 410 G/M<sup>2</sup>  
**Material:** Wolle 75%  
Viskose 25%

**Color fastness:**  
*Against dry rubbing according to EN ISO 105-X12:*  
- 4-5 (Scale 1-5)  
*Gegen Licht nach EN ISO 105-B02*  
- 5-7 (Skala 1-8)  
*Against wet rubbing according to EN ISO 105-X12:*  
- 3-4 (Scale 1-5)

**Scheuerfestigkeit:**  
*Martindale (Nach: EN ISO 12947-2):*  
- 50000 Touren

**Schwerentflammbarkeit:**  
- BS 5852, Crib 5  
- TB 117  
- IMO FTP Code Part 8 (IMO Res. A.652 (16)  
- UNI 9175, 1 IM

### Wartungsanweisungen:



### For further information:

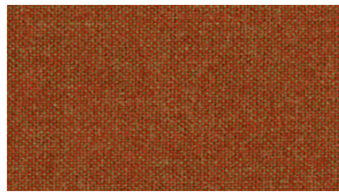
Svensson  
511 82 Kinna, Sweden

T: +46 320 20 92 00  
F: +46 320 21 10 10  
E: info@ludvigsvensson.com

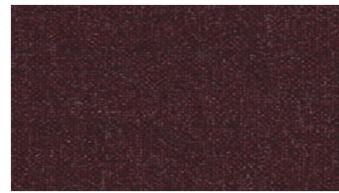




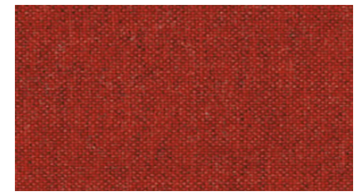
860



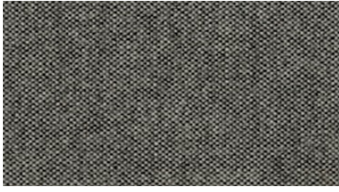
870



886



888



900



990

## STEP

### Upholstery fabrics

**Breite:** 140 cm  
**Gewicht:** 410 G/M<sup>2</sup>  
**Material:** Wolle 75%  
 Viskose 25%

**Color fastness:**  
*Against dry rubbing according to EN ISO 105-X12:*  
 - 4-5 (Scale 1-5)  
*Gegen Licht nach EN ISO 105-B02*  
 - 5-7 (Skala 1-8)  
*Against wet rubbing according to EN ISO 105-X12:*  
 - 3-4 (Scale 1-5)

**Scheuerfestigkeit:**  
*Martindale (Nach: EN ISO 12947-2):*  
 - 50000 Touren

**Schwerentflammbarkeit:**  
 - BS 5852, Crib 5  
 - TB 117  
 - IMO FTP Code Part 8 (IMO Res. A.652 (16)  
 - UNI 9175, 1 IM

**Wartungsanweisungen:**



**For further information:**

Svensson  
 511 82 Kinna, Sweden

T: +46 320 20 92 00  
 F: +46 320 21 10 10  
 E: info@ludvigsvensson.com

