



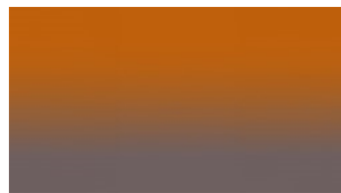
**OMBRÉ 300**  
Hanging fabrics



3010



3132



3154



4050



4280



4564



4650



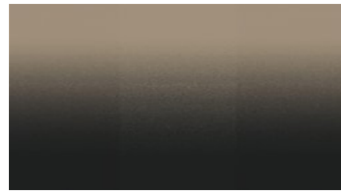
5310



5922



6531



6780



8440

## OMBRÉ 300

### Hanging fabrics

**Breite:** 300 cm

**Gewicht:** 220 G/M<sup>2</sup>

**Material:** Trevira CS 100%

**Einlaufen:** 2 %

**Farbechtheit:**

*Gegen Licht nach EN ISO 105-B02*

- ≥ 5-7 (Skala 1-8)

*Against washing according to EN*

*ISO 105-C06*

- ≥ 5 (Scale 1-5)

**Schwerentflammbarkeit:**

- BS 5867-2 Type B- DIN 4102 B1-

EN 13773, Class 1- IMO FTP Code

2010:

- DIN 4102 B1

- EN 13773, Class 1

- IMO FTP Code 2010: Part 7

- NFP 92-503-507, M1

- EN 13501-1; B-s1, d0

- UNI 8456 / 8457

- NFPA 701

**Akustik:**

Measurement of sound absorption

in a reverberation room: EN ISO

354:2003. Ratio of sound absorption

EN ISO 11654:1997: w = 0,70(H),

Class C

**For further information:**

Svensson

511 82 Kinna, Sweden

T: +46 320 20 92 00

F: +46 320 21 10 10

E: info@ludvigsvensson.com

