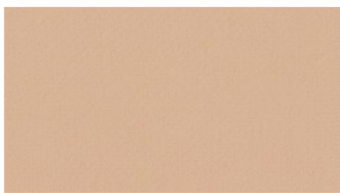




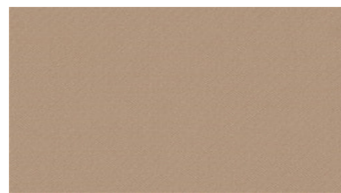
BLUSH
Hanging fabrics



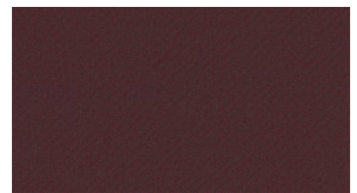
3021



3235



3241



3872



4442



4471



4562



5431



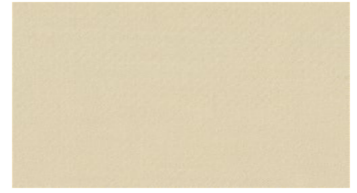
5472



6232



6252



6311



6510



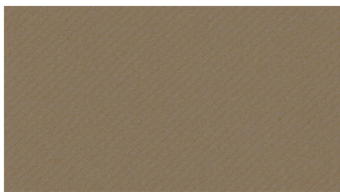
6531



6623



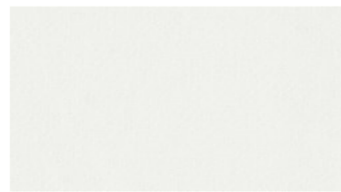
6700



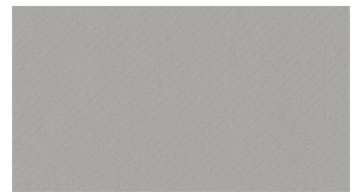
6752



6943



8000



8220

BLUSH

Hanging fabrics

Breite: 300 cm

Gewicht: 320 G/M²

Material: Trevira CS 100%

Einlaufen: 2 %

Farbechtheit:

Gegen Licht nach EN ISO 105-B02

- ≥ 5-7 (Skala 1-8)

Against washing according to EN

ISO 105-C06

- ≥ 5 (Scale 1-5)

Schwerentflammbarkeit:

- BS 5867-2 Type B - DIN 4102 B1-

IMO FTP Code 2010:

- DIN 4102 B1

- IMO FTP Code 2010: Part 7

- NFP 92-503-507, M1

- EN 13773, Class 1

- EN 13501-1; B-s1, d0

- NFPA 701

- UNI 8456 / 8457

- SN 198898

Akustik:

Messung der Schallabsorption in Hallräumen EN ISO 354:2003. Schallabsorber für die Anwendung in Gebäuden Bewertung

der Schallaabsorption: EN ISO 11654:1997:

w = 0,90(H), Class A

Wartungsanweisungen:



For further information:

Svensson
511 82 Kinna, Sweden

T: +46 320 20 92 00

F: +46 320 21 10 10

E: info@ludvigsvensson.com

