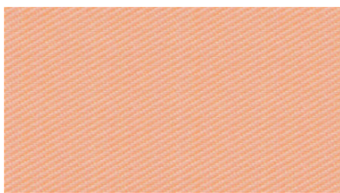


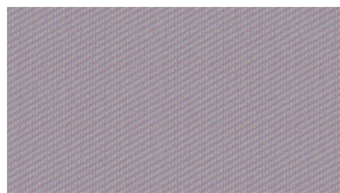


CORE
Hanging fabrics

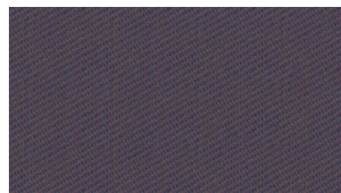
 **svensson**



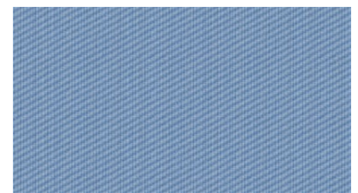
3014



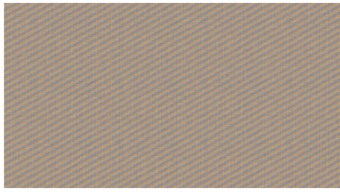
4122



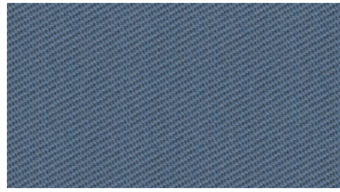
4262



4324



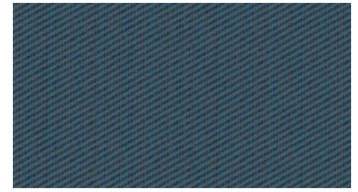
4431



4443



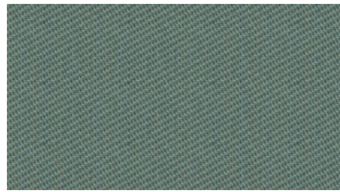
4472



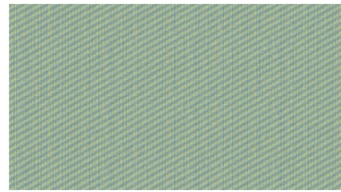
4554



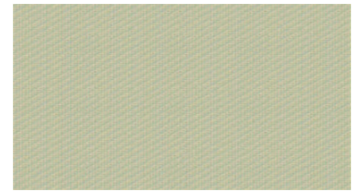
4872



5052



5232



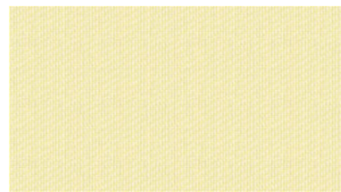
5421



5671



6042



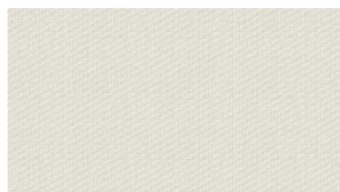
6404



6510



6633



8000



8110



8440

CORE

Hanging fabrics

Breite: 300 cm

Gewicht: 215 G/M²

Material: Trevira CS 100%

Einlaufen: 2 %

Farbechtheit:

Gegen Licht nach EN ISO 105-B02

- ≥ 5-7 (Skala 1-8)

Against washing according to EN

ISO 105-C06

- ≥ 5 (Scale 1-5)

Schwerentflammbarkeit:

- BS 5867-2 Type B - DIN 4102-1

B1 - IMO FTP Code 2010:

- DIN 4102-1 B1

- IMO FTP Code 2010: Part 7

- NF P 92-503-507, M1

- EN 13773, Class 1

- EN 13501-1, Class B-s1, d0

- NFPA 701

- UNI 8456/8457

- SN 198898

For further information:

Svensson
511 82 Kinna, Sweden

T: +46 320 20 92 00

F: +46 320 21 10 10

E: info@ludvigsvensson.com

Wartungsanweisungen:

