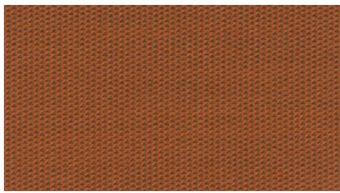


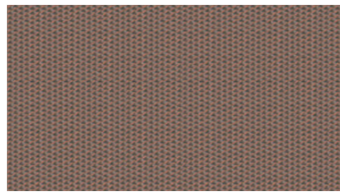


NODE
Upholstery fabrics

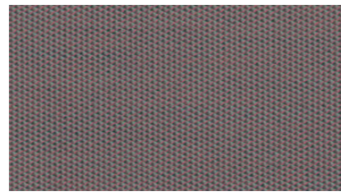
 **svensson**



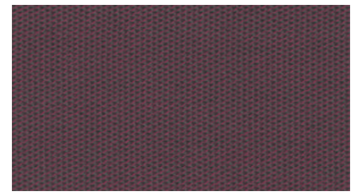
3045



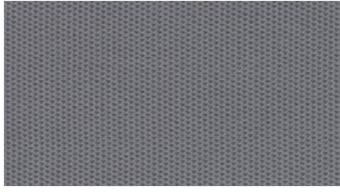
3061



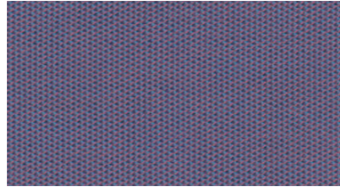
3371



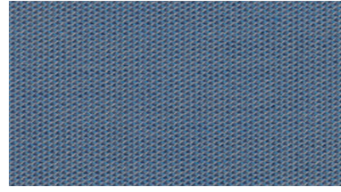
3854



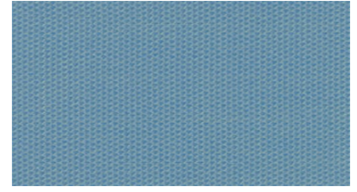
4070



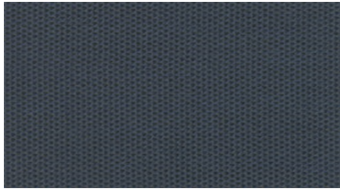
4244



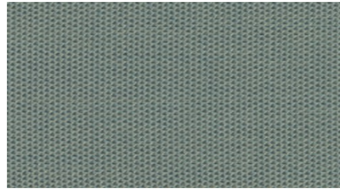
4444



4633



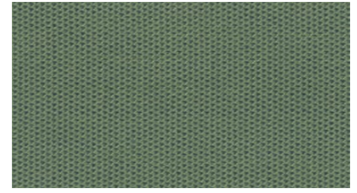
4654



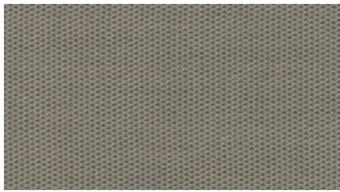
4842



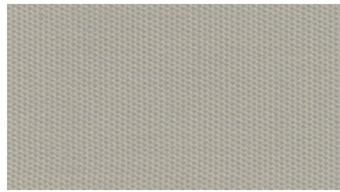
5054



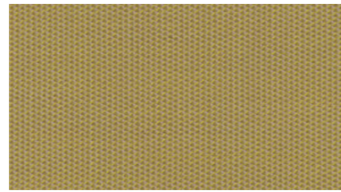
5852



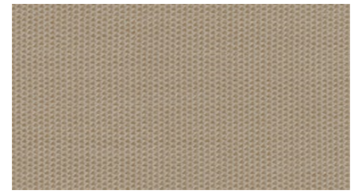
6471



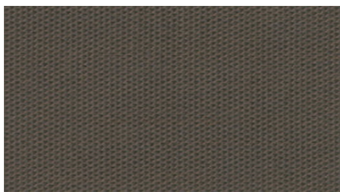
6530



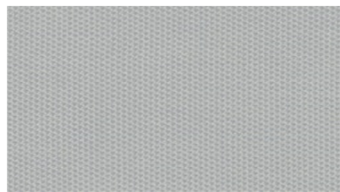
6543



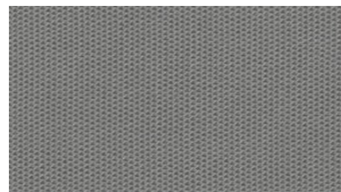
6730



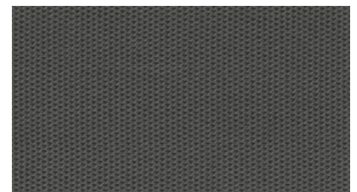
6780



8330



8660



8880

NODE Upholstery fabrics

Breite: 140 cm
Gewicht: 340 G/M²
Material: Wolle 85%
Polyamid 15%

Color fastness:
Against dry rubbing according to EN ISO 105-X12:
- ≥4 (Scale 1-5)
Gegen Licht nach EN ISO 105-B02
- ≥5-7 (Skala 1-8)
Against wet rubbing according to EN ISO 105-X12:
- ≥3-4 (Scale 1-5)

Scheuerfestigkeit:
Martindale (Nach: EN ISO 12947-2):
- 100000 Touren

Schwerentflammbarkeit:

- BS 5852, Crib 5
- IMO FTP Code Part 8

Wartungsanweisungen:



For further information:

Svensson
511 82 Kinna, Sweden

T: +46 320 20 92 00
F: +46 320 21 10 10
E: info@ludvigsvensson.com

