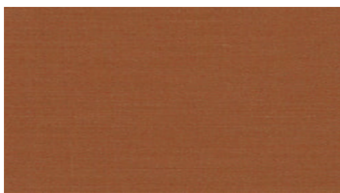
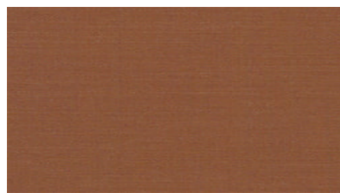




CODY
Upholstery fabrics



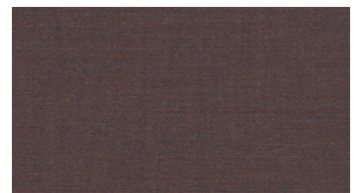
3226



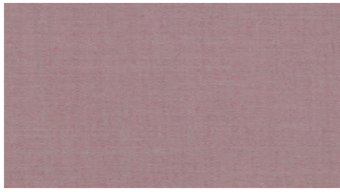
3334



3350



3572



3633



4152



4380



4462



4522



4831



4862



5251



5261



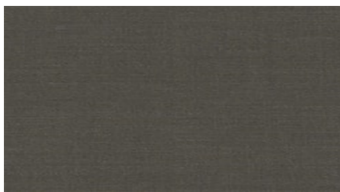
5731



5870



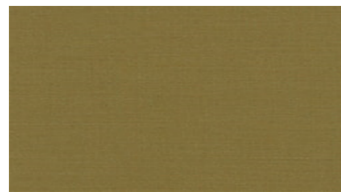
5934



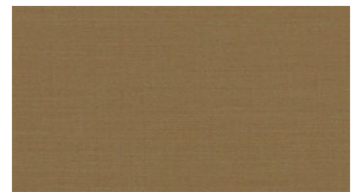
6360



6422



6443



6453

CODY

Upholstery fabrics

Design von: Johanna de Ru

Breite: 140 cm

Gewicht: 280 G/M²

Material: Wolle 85%
Polyamid 15%

Color fastness:

Against dry rubbing according to EN ISO 105-X12:

- ≥ 4 (Scale 1-5)

Gegen Licht nach EN ISO 105-B02

- ≥ 5-7 (Skala 1-8)

Against wet rubbing according to EN ISO 105-X12:

- ≥ 3-4 (Scale 1-5)

Scheuerfestigkeit:

Martindale (Nach: EN ISO 12947-2):

- 100000 Touren

Schwerentflammbarkeit:

- EN ISO 1021 part 1, 2- BS 5852,

Crib 5- IMO FTP Code 2010:

- BS 5852, Crib 5

- IMO FTP Code 2010: Part 8

Wartungsanweisungen:



Zertifikate:



For further information:

Svensson
511 82 Kinna, Sweden

T: +46 320 20 92 00

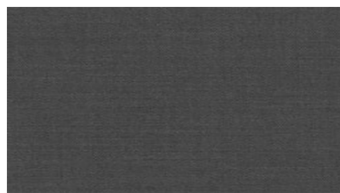
F: +46 320 21 10 10

E: info@ludvigsvensson.com





6520



6560



6740



6750



6770



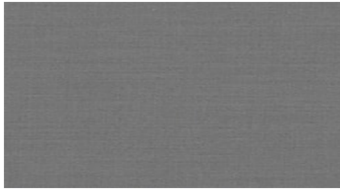
6820



6826



6841



8400



8800

CODY Upholstery fabrics

Design von: Johanna de Ru

Breite: 140 cm

Gewicht: 280 G/M²

Material: Wolle 85%
Polyamid 15%

Color fastness:

Against dry rubbing according to
EN ISO 105-X12:

- ≥ 4 (Scale 1-5)

Gegen Licht nach EN ISO 105-B02

- ≥ 5-7 (Skala 1-8)

Against wet rubbing according to

EN ISO 105-X12:

- ≥ 3-4 (Scale 1-5)

Scheuerfestigkeit:

Martindale (Nach: EN ISO 12947-2):

- 100000 Touren

Schwerentflammbarkeit:

- EN ISO 1021 part 1, 2- BS 5852,
Crib 5- IMO FTP Code 2010:

- BS 5852, Crib 5

- IMO FTP Code 2010: Part 8

Wartungsanweisungen:



Zertifikate:



For further information:

Svensson
511 82 Kinna, Sweden

+46 320 20 92 00

+46 320 21 10 10

E: info@ludvigsvensson.com

