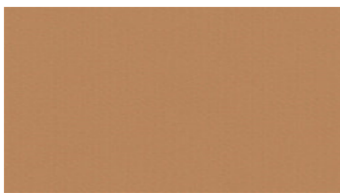
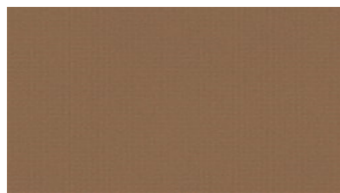


**MACRO**  
Upholstery fabrics

 **svensson**



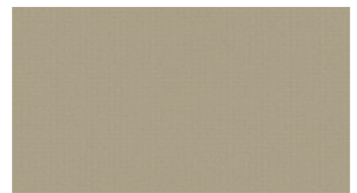
3023



3142



3154



3221



3436



3527



3554



3560



3570



4425



4433



4445



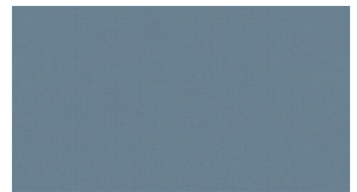
4453



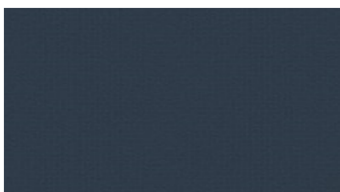
4531



4536



4552



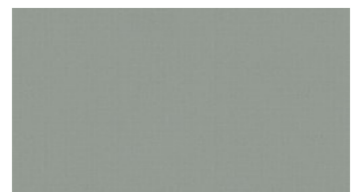
4580



4653



4661



4730

## MACRO

### Upholstery fabrics

**Breite:** 140 cm

**Gewicht:** 335 G/M<sup>2</sup>

**Material:** Wolle 85%  
Polyamid 15%

**Color fastness:**

Against dry rubbing according to  
EN ISO 105-X12:  
- ≥4 (Scale 1-5)

Gegen Licht nach EN ISO 105-B02  
- ≥5-7 (Skala 1-8)

Against wet rubbing according to  
EN ISO 105-X12:  
- ≥3-4 (Scale 1-5)

**Scheuerfestigkeit:**

Martindale (Nach: EN ISO 12947-2):  
- 100000 Touren

**Schwerentflammbarkeit:**

- IMO FTP Code Part 8  
- UNI 9175, 1IM

**For further information:**

Svensson  
511 82 Kinna, Sweden

T: +46 320 20 92 00  
F: +46 320 21 10 10  
E: info@ludvigsvensson.com





4861



4863



5730



5863



5871



5881



5932



6062



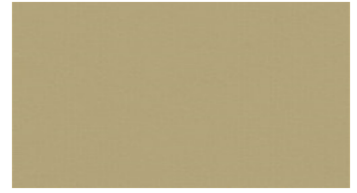
6133



6322



6424



6621



6631



6644



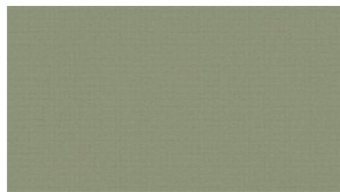
6662



6744



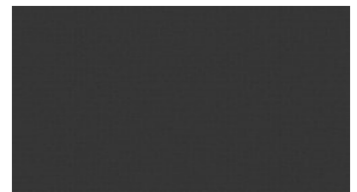
6841



8330



8440



8900

## MACRO

### Upholstery fabrics

**Breite:** 140 cm

**Gewicht:** 335 G/M<sup>2</sup>

**Material:** Wolle 85%  
Polyamid 15%

**Color fastness:**

*Against dry rubbing according to*

*EN ISO 105-X12:*

- ≥4 (Scale 1-5)

*Gegen Licht nach EN ISO 105-B02*

- ≥5-7 (Skala 1-8)

*Against wet rubbing according to*

*EN ISO 105-X12:*

- ≥3-4 (Scale 1-5)

**Scheuerfestigkeit:**

*Martindale (Nach: EN ISO 12947-2):*

- 100000 Touren

**Schwerentflammbarkeit:**

- IMO FTP Code Part 8

- UNI 9175, 1IM

**For further information:**

Svensson  
511 82 Kinna, Sweden

T: +46 320 20 92 00

F: +46 320 21 10 10

E: [info@ludvigsvensson.com](mailto:info@ludvigsvensson.com)

