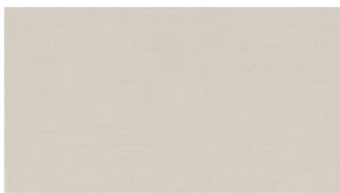




**KARAT RE**  
Hanging fabrics

 **svensson**



3010



3124



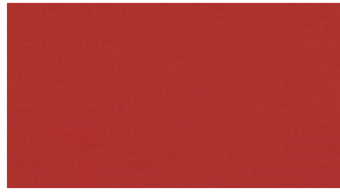
3233



3343



3526



3546



3874



4331



4372



4544



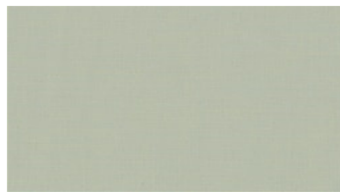
4574



4622



4831



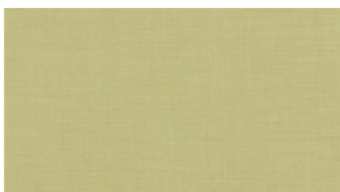
5221



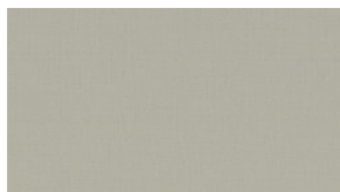
5622



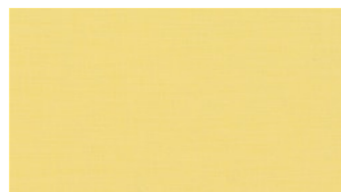
5688



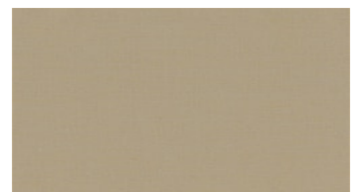
5910



6030



6506



6641

## KARAT RE

### Hanging fabrics

**Breite:** 300 cm

**Gewicht:** 150 G/M<sup>2</sup>

**Material:** Recycled Trevira CS 100%

**Einlaufen:** 2 %

**Farbechtheit:**

*Gegen Licht nach EN ISO 105-B02*

- ≥ 5-7 (Skala 1-8)

*Against washing according to EN*

*ISO 105-C06*

- ≥ 5 (Scale 1-5)

**Schwerentflammbarkeit:**

- BS 5867:

- DIN 4102-1 class B1

- EN 13773 class 1

- EN 13501-1, B-s1, d0

**Wartungsanweisungen:**



**For further information:**

Svensson  
511 82 Kinna, Sweden

T: +46 320 20 92 00

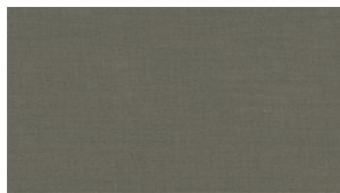
F: +46 320 21 10 10

E: [info@ludvigsvensson.com](mailto:info@ludvigsvensson.com)

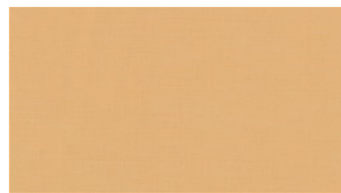




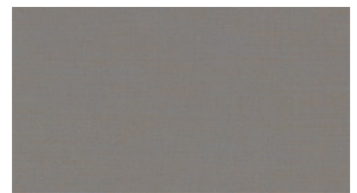
6721



6782



6823



6941



8000



8032



8110



8300



8500



8700

## KARAT RE

Hanging fabrics

**Breite:** 300 cm

**Gewicht:** 150 G/M<sup>2</sup>

**Material:** Recycled Trevira CS 100%

**Einlaufen:** 2 %

**Farbechtheit:**

*Gegen Licht nach EN ISO 105-B02*

- ≥ 5-7 (Skala 1-8)

*Against washing according to EN*

*ISO 105-C06*

- ≥ 5 (Scale 1-5)

**Schwerentflammbarkeit:**

- BS 5867:

- DIN 4102-1 class B1

- EN 13773 class 1

- EN 13501-1, B-s1, d0

**Wartungsanweisungen:**



**For further information:**

Svensson  
511 82 Kinna, Sweden

T: +46 320 20 92 00

F: +46 320 21 10 10

E: [info@ludvigsvensson.com](mailto:info@ludvigsvensson.com)

