

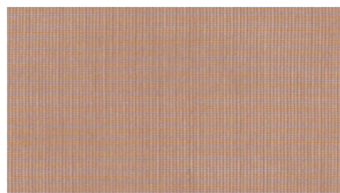


**AIRY**  
Hanging fabrics

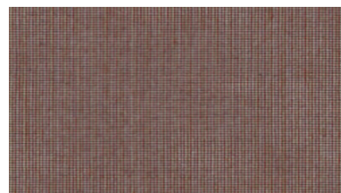
 **svensson**



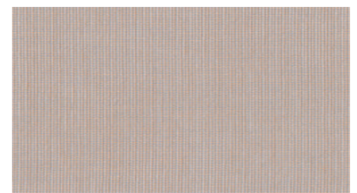
3010



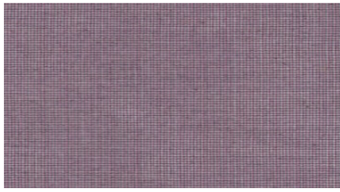
3243



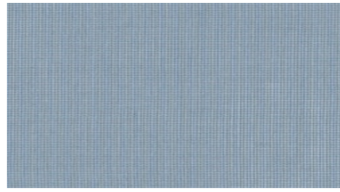
3463



3631



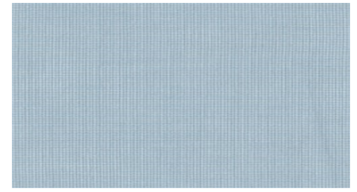
4053



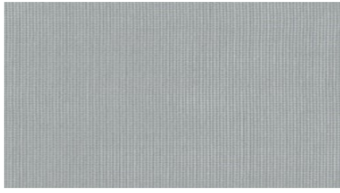
4333



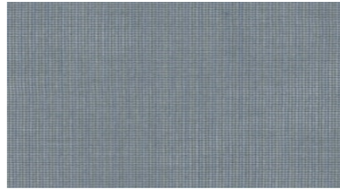
4410



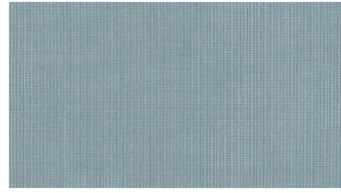
4422



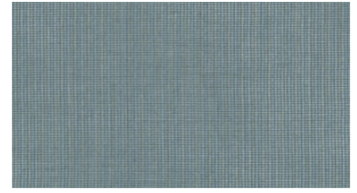
4441



4461



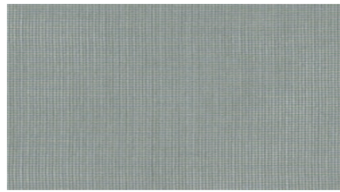
4542



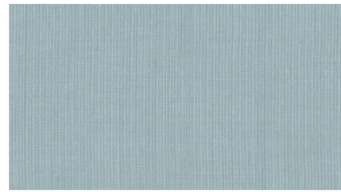
4652



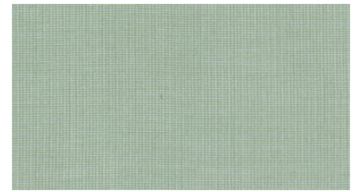
4672



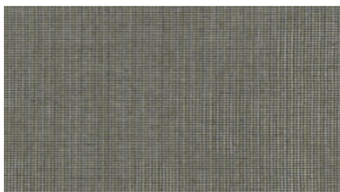
4851



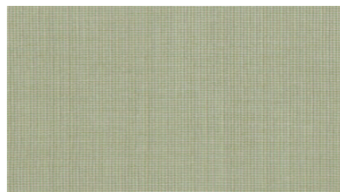
5031



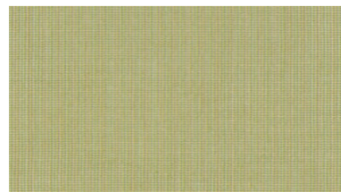
5631



5681



6242



6444



6531

## AIRY

### Hanging fabrics

**Breite:** 300 cm  
**Gewicht:** 115 G/M<sup>2</sup>  
**Material:** Trevira CS 100%  
**Einlaufen:** 2 %

**Farbechtheit:**  
*Gegen Licht nach EN ISO 105-B02*  
 - ≥ 5-7 (Skala 1-8)  
*Against washing according to EN ISO 105-C06*  
 - ≥ 5 (Scale 1-5)

**Schwerentflammbarkeit:**  
 - BS 5867-2 Type B - DIN 4102-1  
 B1 - IMO FTP Code 2010:  
 - DIN 4102-1 B1  
 - IMO FTP Code 2010: Part 7  
 - NF P 92-503-507, M1  
 - EN 13773, Class 1  
 - EN 13501-1, Class B-s1, d0  
 - NFPA 701  
 - UNI 8456/8457

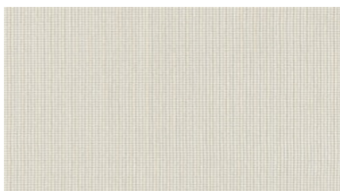
#### For further information:

Svensson  
 511 82 Kinna, Sweden

T: +46 320 20 92 00  
 F: +46 320 21 10 10  
 E: info@ludvigsvensson.com

#### Wartungsanweisungen:

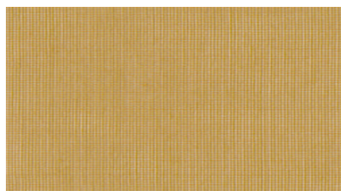




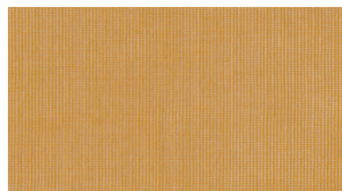
6711



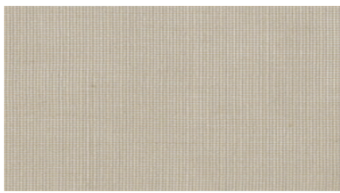
6723



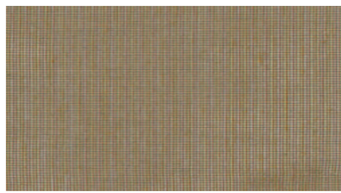
6736



6827



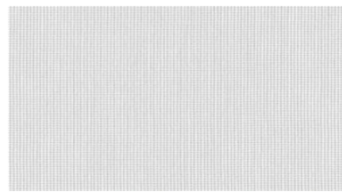
6841



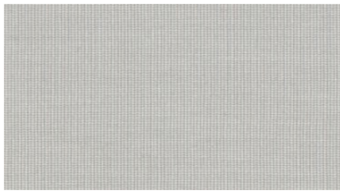
6862



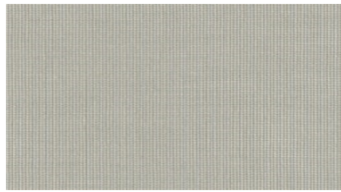
6920



8000



8220



8330

## AIRY Hanging fabrics

**Breite:** 300 cm

**Gewicht:** 115 G/M<sup>2</sup>

**Material:** Trevira CS 100%

**Einlaufen:** 2 %

**Farbechtheit:**

*Gegen Licht nach EN ISO 105-B02*

- ≥ 5-7 (Skala 1-8)

*Against washing according to EN*

*ISO 105-C06*

- ≥ 5 (Scale 1-5)

**Schwerentflammbarkeit:**

- BS 5867-2 Type B - DIN 4102-1

B1 - IMO FTP Code 2010:

- DIN 4102-1 B1

- IMO FTP Code 2010: Part 7

- NF P 92-503-507, M1

- EN 13773, Class 1

- EN 13501-1, Class B-s1, d0

- NFPA 701

- UNI 8456/8457

**For further information:**

Svensson  
511 82 Kinna, Sweden

T: +46 320 20 92 00

F: +46 320 21 10 10

E: [info@ludvigsvensson.com](mailto:info@ludvigsvensson.com)

**Wartungsanweisungen:**

