

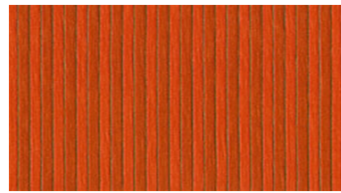
**KENT**  
Upholstery fabrics



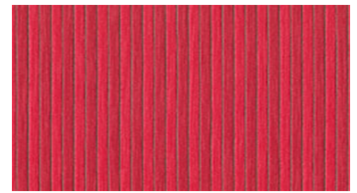
1500



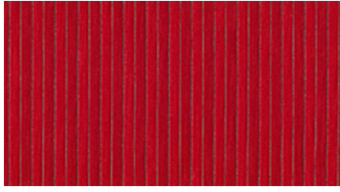
3035



3218



3408



3520



4415



4442



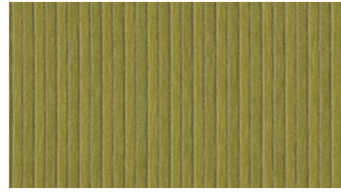
5033



5531



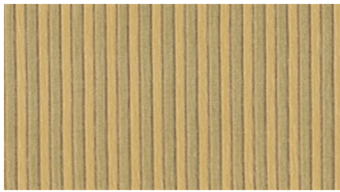
6407



6433



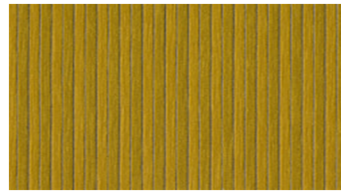
6530



6612



6620



6645



6731



6808

## KENT

### Upholstery fabrics

**Breite:** 140 cm  
**Gewicht:** 450 G/M<sup>2</sup>  
**Material:** Trevira CS 100%  
**Einlaufen:** 2 %

**Color fastness:**  
*Against dry rubbing according to EN ISO 105-X12:*  
 - 4 (Scale 1-5)  
*Gegen Licht nach EN ISO 105-B02*  
 - 5-7 (Skala 1-8)  
*Against wet rubbing according to EN ISO 105-X12:*  
 - 3-4 (Scale 1-5)

**Scheuerfestigkeit:**  
*Martindale (Nach: EN ISO 12947-2):*  
 - 50000 Touren

**Schwerentflammbarkeit:**  
 - EN 1021 1, 2- DIN 4102-1 B1-  
 IMO FTP Code 2010:  
 - DIN 4102-1 B1  
 - IMO FTP Code 2010: Part 8  
 - BS 5852 crib 5  
 - NF P 92-503-507, M3  
 - UNI 9175, 1 IM

#### Wartungsanweisungen:



#### For further information:

Svensson  
 511 82 Kinna, Sweden

T: +46 320 20 92 00  
 F: +46 320 21 10 10  
 E: info@ludvigsvensson.com

