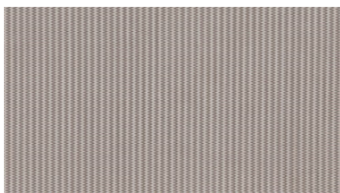


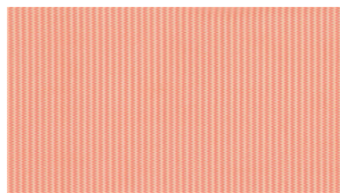


SWAY
Hanging fabrics

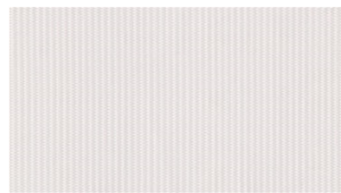
 **svensson**



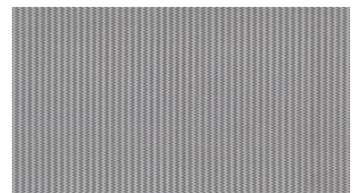
3162



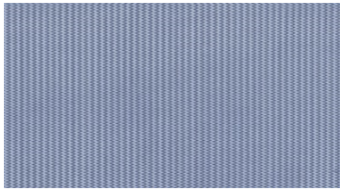
3216



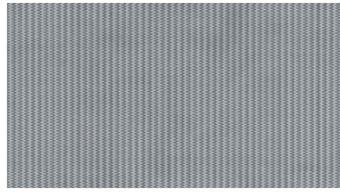
3601



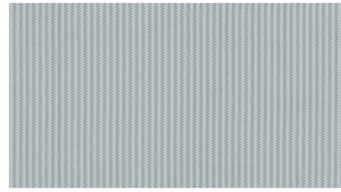
3681



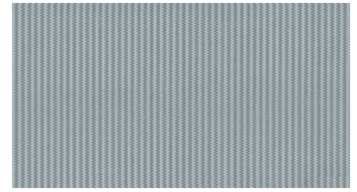
4336



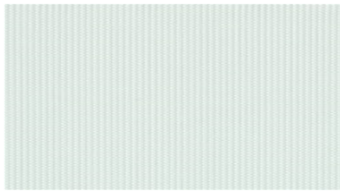
4372



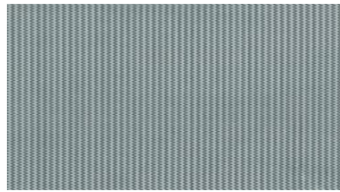
4531



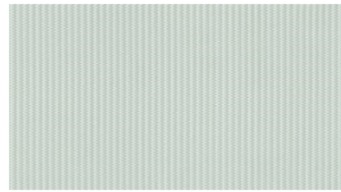
4552



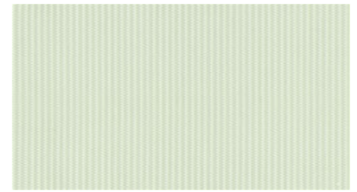
5211



5354



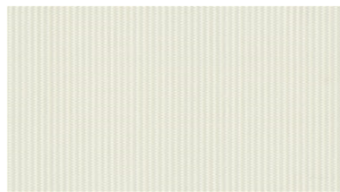
6020



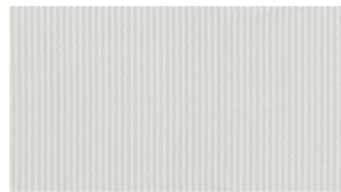
6111



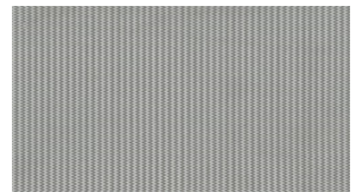
6416



6700



6710



8770

SWAY Hanging fabrics

Design von: Svensson

Breite: 300 cm

Gewicht: 60 G/M²

Material: Trevira CS 100%

Einlaufen: 2 %

Farbechtheit:

Gegen Licht nach EN ISO 105-B02

- ≥ 5-7 (Skala 1-8)

Against washing according to EN

ISO 105-C06

- ≥ 5 (Scale 1-5)

Schwerentflammbarkeit:

- BS 5867:

- DIN 4102-1 class B1

- IMO FTP Code Part 7

- NF P 92-503-507, M

- EN 13773 class 1

- EN 13501-1, B-s1, d0

- NFPA 701

- UNI 8456/8457

- SN 198898

For further information:

Svensson
511 82 Kinna, Sweden

T: +46 320 20 92 00

F: +46 320 21 10 10

E: info@ludvigsvensson.com



Wartungsanweisungen:



Zertifikate:

