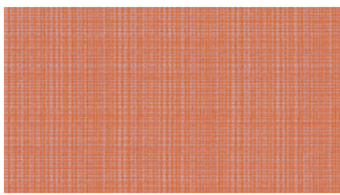
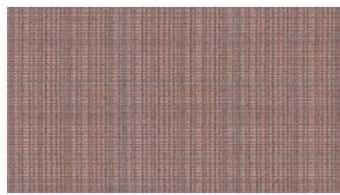


**INK**  
Upholstery fabrics



3216



3252



3360



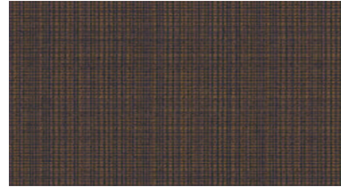
3421



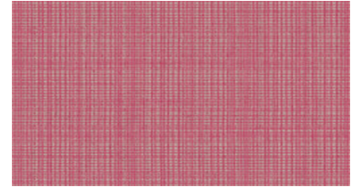
3462



3672



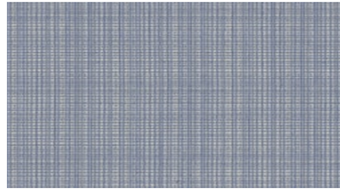
3681



3725



3780



4323



4326



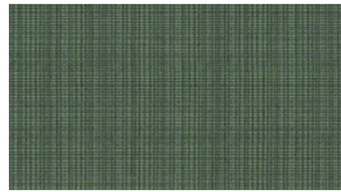
4345



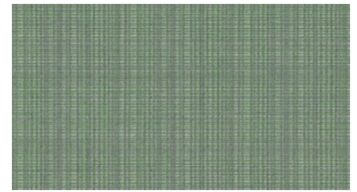
4562



5043



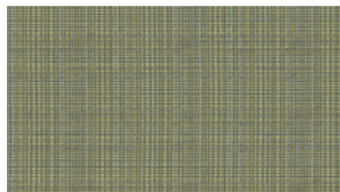
5744



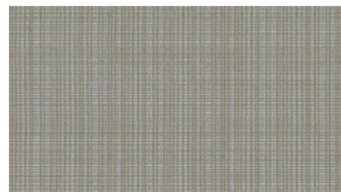
5824



6416



6424



6641



6915

## INK Upholstery fabrics

**Breite:** 140 cm  
**Gewicht:** 330 G/M<sup>2</sup>  
**Material:** Wolle 85%  
Polyamid 15%

**Color fastness:**  
*Against dry rubbing according to EN ISO 105-X12:*  
- ≥4 (Scale 1-5)  
*Gegen Licht nach EN ISO 105-B02*  
- 5-7 (Skala 1-8)  
*Against wet rubbing according to EN ISO 105-X12:*  
- 3-4 (Scale 1-5)

**Scheuerfestigkeit:**  
*Martindale (Nach: EN ISO 12947-2):*  
- 60000 Touren

**Schwerentflammbarkeit:**  
- BS 5852 Crib 5  
- TB 117  
- IMO FTP Code Part 8 (IMO Res. A.652 (16))

### Wartungsanweisungen:



### For further information:

Svensson  
511 82 Kinna, Sweden

T: +46 320 20 92 00  
F: +46 320 21 10 10  
E: info@ludvigsvensson.com





8500

## INK

### Upholstery fabrics

**Breite:** 140 cm  
**Gewicht:** 330 G/M<sup>2</sup>  
**Material:** Wolle 85%  
Polyamid 15%

**Color fastness:**

*Against dry rubbing according to EN ISO 105-X12:*  
- ≥4 (Scale 1-5)  
*Gegen Licht nach EN ISO 105-B02*  
- 5-7 (Skala 1-8)  
*Against wet rubbing according to EN ISO 105-X12:*  
- 3-4 (Scale 1-5)

**Scheuerfestigkeit:**  
*Martindale (Nach: EN ISO 12947-2):*  
- 60000 Touren

**Schwerentflammbarkeit:**

- BS 5852 Crib 5  
- TB 117  
- IMO FTP Code Part 8 (IMO Res. A.652 (16)

**Wartungsanweisungen:**



**For further information:**

Svensson  
511 82 Kinna, Sweden

T: +46 320 20 92 00  
F: +46 320 21 10 10  
E: [info@ludvigsvensson.com](mailto:info@ludvigsvensson.com)

