

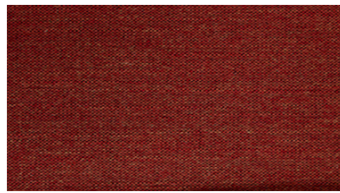


BALANCE
Upholstery fabrics

 **svensson**



3030



3227



3418



3726



3732



3863



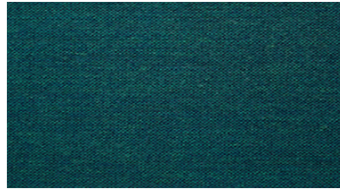
4436



4454



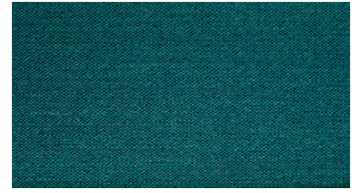
4615



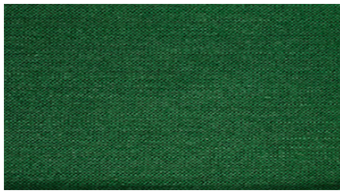
4745



4831



5026



5636



5842



5917



6072



6336



6636



6708



6908

BALANCE Upholstery fabrics

Breite: 140 cm

Gewicht: 570 G/M²

Material: Wolle 82%
Polyamid 6%
RAMI 12%

Color fastness:

Against dry rubbing according to
EN ISO 105-X12:

- 4 (Scale 1-5)

Gegen Licht nach EN ISO 105-B02

- 5-7 (Skala 1-8)

Against wet rubbing according to
EN ISO 105-X12:

- 3-4 (Scale 1-5)

Scheuerfestigkeit:

Martindale (Nach: EN ISO 12947-2):

- 100000 Touren

Schwerentflammbarkeit:

- EN ISO 1021 part 1, 2- BS 5852

Crib 5- UNI 9175, 1 IM- TB 117-

IMO FTP Code 2010:

- BS 5852 Crib 5

- UNI 9175, 1 IM

- TB 117

- IMO FTP Code 2010: Part 8

For further information:

Svensson
511 82 Kinna, Sweden

T: +46 320 20 92 00

F: +46 320 21 10 10

E: info@ludvigsvensson.com





6972



8200



8500



8900

BALANCE

Upholstery fabrics

Breite: 140 cm

Gewicht: 570 G/M²

Material: Wolle 82%
Polyamid 6%
RAMI 12%

Color fastness:

Against dry rubbing according to
EN ISO 105-X12:

- 4 (Scale 1-5)

Gegen Licht nach EN ISO 105-B02

- 5-7 (Skala 1-8)

Against wet rubbing according to
EN ISO 105-X12:

- 3-4 (Scale 1-5)

Scheuerfestigkeit:

Martindale (Nach: EN ISO 12947-2):

- 100000 Touren

Schwerentflammbarkeit:

- EN ISO 1021 part 1, 2- BS 5852

Crib 5- UNI 9175, 1 IM- TB 117-

IMO FTP Code 2010:

- BS 5852 Crib 5

- UNI 9175, 1 IM

- TB 117

- IMO FTP Code 2010: Part 8

For further information:

Svensson
511 82 Kinna, Sweden

T: +46 320 20 92 00

F: +46 320 21 10 10

E: info@ludvigsvensson.com

