

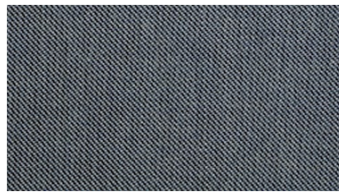


**BE ON**  
Upholstery fabrics

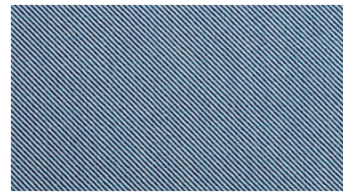
 **svensson**



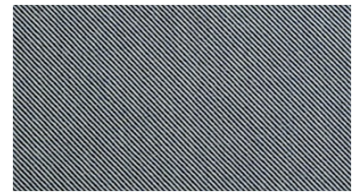
4340



4343



4422



4423



4434



4445



4448



4463

## BE ON

### Upholstery fabrics

**Breite:** 140 cm

**Gewicht:** 390 G/M<sup>2</sup>

**Material:** Wolle 93%  
Polyamid 7%  
\*4448: 92% Wool,  
8% Polyamide

**Color fastness:**

Against dry rubbing according to  
EN ISO 105-X12:

- ≥4 (Scale 1-5)

Gegen Licht nach EN ISO 105-B02

- ≥5-7 (Skala 1-8)

Against wet rubbing according to

EN ISO 105-X12:

- ≥3-4 (Scale 1-5)

**Scheuerfestigkeit:**

Martindale (Nach: EN ISO 12947-2):

- 80000 Touren

**Schwerentflammbarkeit:**

- EN ISO 1021 part 1, 2- BS 5852

Crib 5- IMO FTP Code 2010:

- BS 5852 Crib 5

- IMO FTP Code 2010: Part 8

**Wartungsanweisungen:**



**For further information:**

Svensson  
511 82 Kinna, Sweden

T: +46 320 20 92 00

F: +46 320 21 10 10

E: info@ludvigsvensson.com

