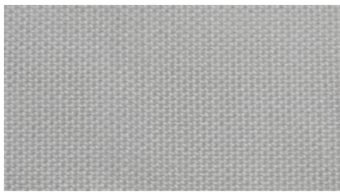




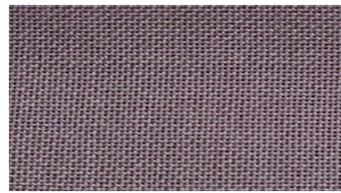
**SALT**  
Hanging fabrics



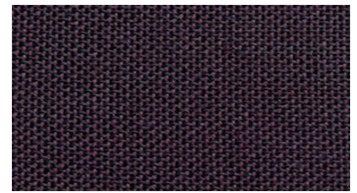
1500



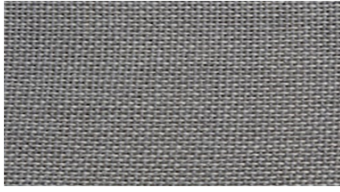
3210



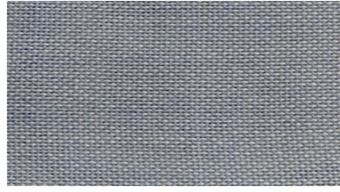
3932



4062



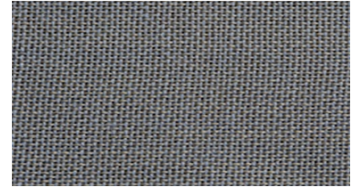
4230



4321



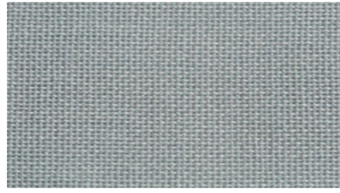
4340



4342



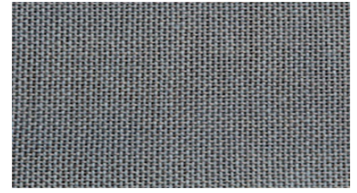
4350



4411



4472



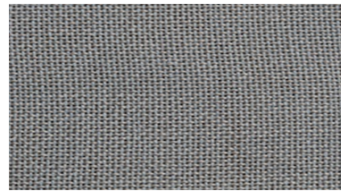
4531



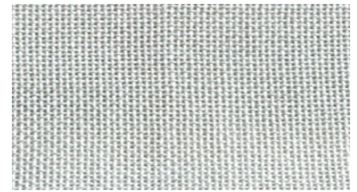
4540



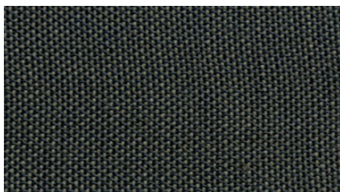
4562



4621



5021



5071



5510



5621



6311

## SALT Hanging fabrics

**Breite:** 300 cm

**Gewicht:** 190 G/M<sup>2</sup>

**Material:** Trevira CS 100%

**Einlaufen:** 2 %

**Farbechtheit:**

*Gegen Licht nach EN ISO 105-B02*

- ≥ 5 - 7 (Skala 1-8)

*Against washing according to EN*

*ISO 105-C06*

- ≥ 5 (Scale 1-5)

**Schwerentflammbarkeit:**

- BS 5867-2 Type B 2019 - DIN 4102-1

B1 2019 - IMO FTP Code 2010:

- DIN 4102-1 B1 2019

- IMO FTP Code 2010: Part 7 2019

- NF P 92-503-507, M1 2019

- EN 13773, Class 1 2019

- EN 13501-1, Class B-s1, d0 2019

- UNI 8456/8457

**For further information:**

Svensson  
511 82 Kinna, Sweden

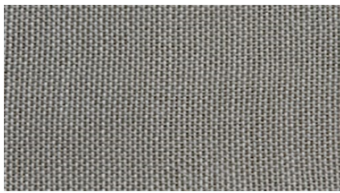
T: +46 320 20 92 00

F: +46 320 21 10 10

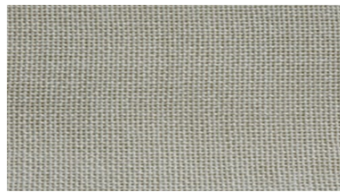
E: info@ludvigsvensson.com

**Wartungsanweisungen:**





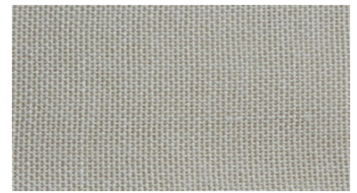
6331



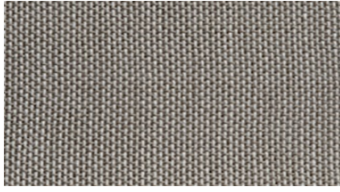
6420



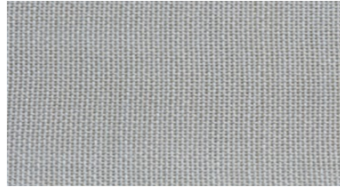
6441



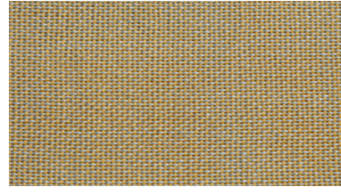
6510



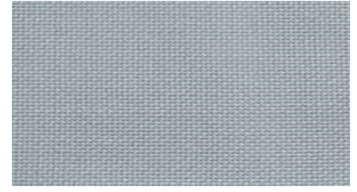
6520



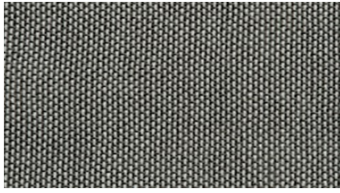
6710



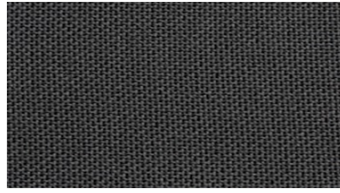
6815



8110



8440



8660

## SALT Hanging fabrics

**Breite:** 300 cm

**Gewicht:** 190 G/M<sup>2</sup>

**Material:** Trevira CS 100%

**Einlaufen:** 2 %

**Farbechtheit:**

*Gegen Licht nach EN ISO 105-B02*

- ≥ 5 - 7 (Skala 1-8)

*Against washing according to EN*

*ISO 105-C06*

- ≥ 5 (Scale 1-5)

**Schwerentflammbarkeit:**

- BS 5867-2 Type B 2019 - DIN 4102-1

B1 2019 - IMO FTP Code 2010:

- DIN 4102-1 B1 2019

- IMO FTP Code 2010: Part 7 2019

- NF P 92-503-507, M1 2019

- EN 13773, Class 1 2019

- EN 13501-1, Class B-s1, d0 2019

- UNI 8456/8457

**For further information:**

Svensson  
511 82 Kinna, Sweden

T: +46 320 20 92 00

F: +46 320 21 10 10

E: info@ludvigsvensson.com

**Wartungsanweisungen:**

