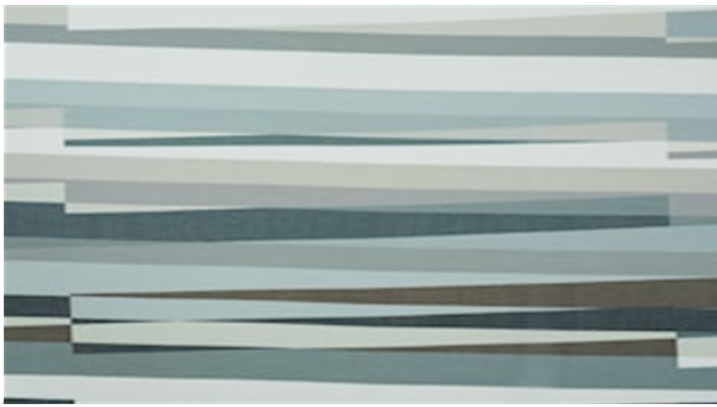




**WOOD**  
Hanging fabrics

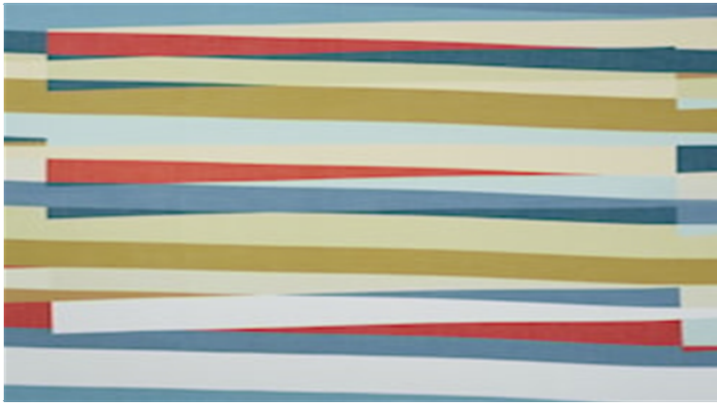
 **svensson**



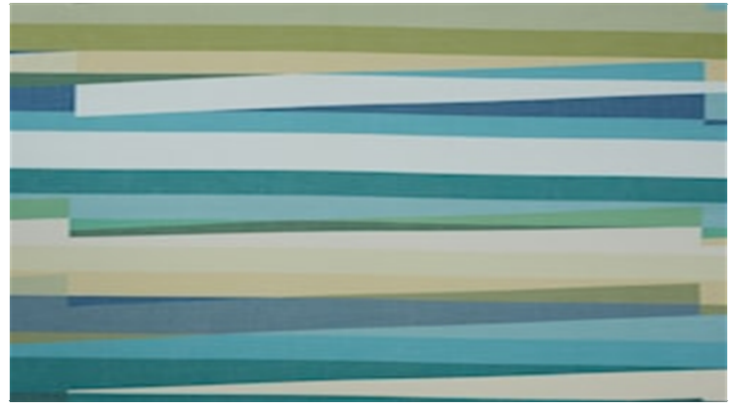
8440



6720



3040



5050



4550

## WOOD

### Hanging fabrics

**Breite:** 150 cm

**Gewicht:** 90 G/M<sup>2</sup>

**Material:** Trevira CS 100%

**Einlaufen:** 2 %

**Farbechtheit:**

*Gegen Licht nach EN ISO 105-B02*

- 5 (Skala 1-8)

*Against washing according to EN*

*ISO 105-C06*

- 5 (Scale 1-5)

**Schwerentflammbarkeit:**

- DIN 4102-1 class B1

- IMO FTP Code Part 7

- NF P 92-503-507, M1

- SN 198898

- UNI 8456/8457

- EN 13773, Class 1

- EN 13501-1

**For further information:**

Svensson  
511 82 Kinna, Sweden

T: +46 320 20 92 00

F: +46 320 21 10 10

E: [info@ludvigsvensson.com](mailto:info@ludvigsvensson.com)

**Wartungsanweisungen:**

