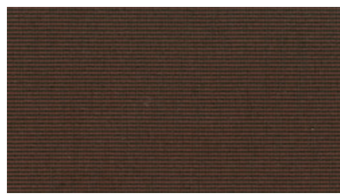




WELL
Hanging fabrics



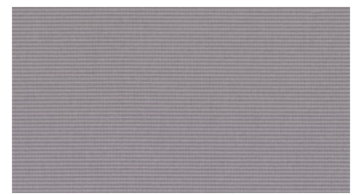
8990



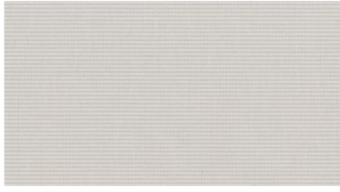
6980



8977



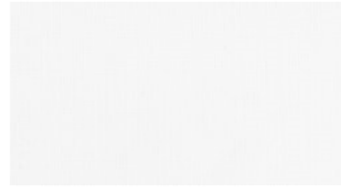
8300



8022



8010



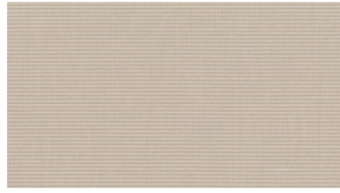
1700



1500



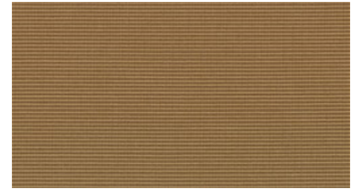
3020



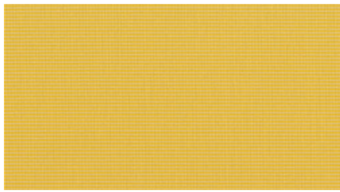
6730



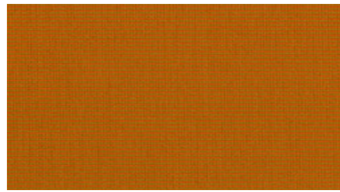
6780



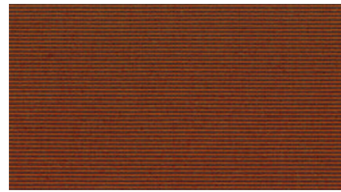
6880



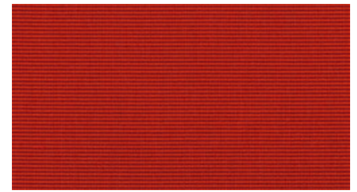
6630



6967



3360



3655



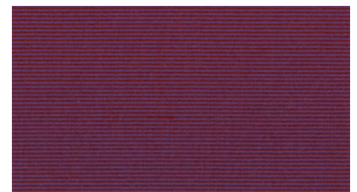
3740



3680



3560



3950

WELL Hanging fabrics

Breite: 150 cm

Gewicht: 290 G/M²

Material: Trevira CS 100%

Einlaufen: 2 %

Farbechtheit:

Gegen Licht nach EN ISO 105-B02

- 5-7 (Skala 1-8)

Against washing according to EN

ISO 105-C06

- 4-5 (Scale 1-5)

Schwerentflammbarkeit:

- IMO FTP Code Part 7 (IMO Res

A 471(12)IMO Re A 563 (14))

- EN 13773, Class 1

- NF P 92-503-507, M1

- SN 198898

- EN 13501-1

- UNI 8456/8457

- NFPA 701

Akustik:

Messung der Schallabsorption in

Hallräumen EN ISO 354:2003. Schallabsorber

fr die Anwendug in Gebäuden Bewertung

der Schallaabsorption: EN ISO 11654:1997:

w = 0,85 Class B

Wartungsanweisungen:



For further information:

Svensson
511 82 Kinna, Sweden

T: +46 320 20 92 00

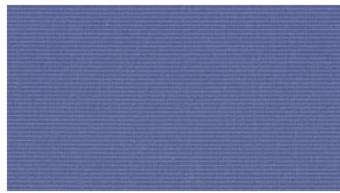
F: +46 320 21 10 10

E: info@ludvigsvensson.com

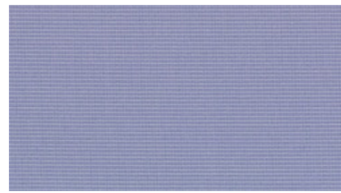




4150



4540



4434



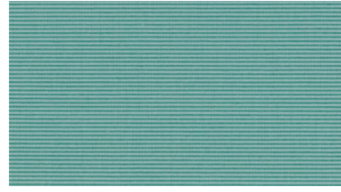
4656



4250



4980



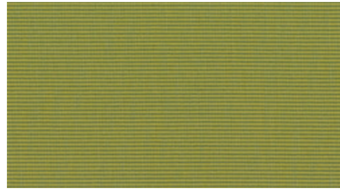
4850



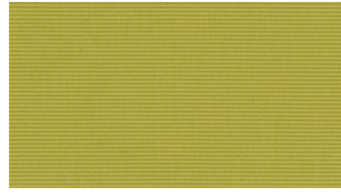
5120



5580



5860



6030

WELL

Hanging fabrics

Breite: 150 cm
Gewicht: 290 G/M²
Material: Trevira CS 100%
Einlaufen: 2 %

Farbechtheit:
Gegen Licht nach EN ISO 105-B02
 - 5-7 (Skala 1-8)
Against washing according to EN ISO 105-C06
 - 4-5 (Scale 1-5)

Schwerentflammbarkeit:

- IMO FTP Code Part 7 (IMO Res A 471(12)IMO Re A 563 (14))
- EN 13773, Class 1
- NF P 92-503-507, M1
- SN 198898
- EN 13501-1
- UNI 8456/8457
- NFPA 701

Akustik:

Messung der Schallabsorption in Hallräumen EN ISO 354:2003. Schallabsorber für die Anwendung in Gebäuden Bewertung der Schallaabsorption: EN ISO 11654:1997: $w = 0,85$ Class B

Wartungsanweisungen:



For further information:

Svensson
 511 82 Kinna, Sweden
 T: +46 320 20 92 00
 F: +46 320 21 10 10
 E: info@ludvigsvensson.com

