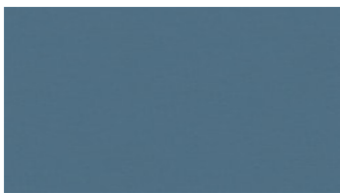
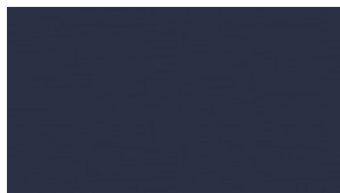




EASY
Upholstery fabrics



4342



4380



4345



4454



4625



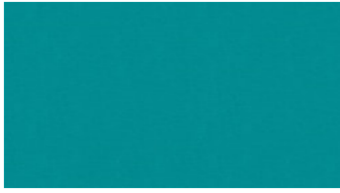
4642



4745



4831



5026



5936



5863



6054



6036



6165



6636



6553



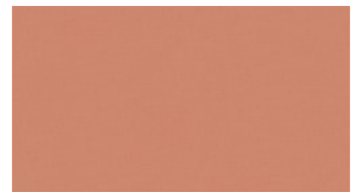
6727



6918



3027



3124

EASY

Upholstery fabrics

Breite: 140 cm
Gewicht: 330 G/M²
Material: Wolle 85%
 Polyamid 15%

Color fastness:
Against dry rubbing according to EN ISO 105-X12:
 - 4 (Scale 1-5)
Gegen Licht nach EN ISO 105-B02
 - 5-7 (Skala 1-8)
Against wet rubbing according to EN ISO 105-X12:
 - 3-4 (Scale 1-5)

Scheuerfestigkeit:
Martindale (Nach: EN ISO 12947-2):
 - 150000 Touren

Schwerentflammbarkeit:
 - EN ISO 1021 part 1, 2- BS 5852
 crib 5- IMO FTP Code 2010:
 - BS 5852 crib 5
 - IMO FTP Code 2010: Part 8
 - UNI 9175, 1 IM
 - TB117

Wartungsanweisungen:

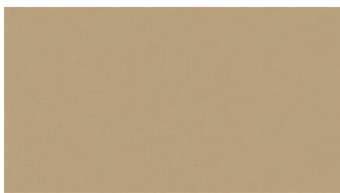


For further information:

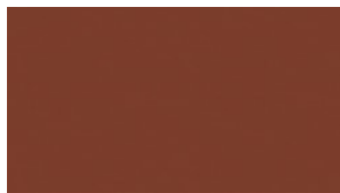
Svensson
 511 82 Kinna, Sweden

T: +46 320 20 92 00
 F: +46 320 21 10 10
 E: info@ludvigsvensson.com

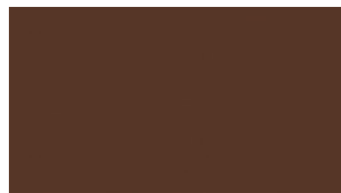




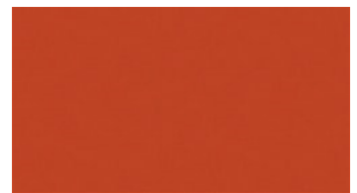
3022



3145



3263



3318



3536



3726



3772



3622



3651



6810



3030



3070



8700



8500



6370



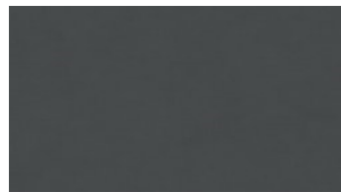
6331



4861



8200



6380



8900

EASY

Upholstery fabrics

Breite: 140 cm
Gewicht: 330 G/M²
Material: Wolle 85%
 Polyamid 15%

Color fastness:
Against dry rubbing according to EN ISO 105-X12:
 - 4 (Scale 1-5)
Gegen Licht nach EN ISO 105-B02
 - 5-7 (Skala 1-8)
Against wet rubbing according to EN ISO 105-X12:
 - 3-4 (Scale 1-5)

Scheuerfestigkeit:
Martindale (Nach: EN ISO 12947-2):
 - 150000 Touren

Schwerentflammbarkeit:
 - EN ISO 1021 part 1, 2- BS 5852
 crib 5- IMO FTP Code 2010:
 - BS 5852 crib 5
 - IMO FTP Code 2010: Part 8
 - UNI 9175, 1 IM
 - TB117

Wartungsanweisungen:



For further information:

Svensson
 511 82 Kinna, Sweden

T: +46 320 20 92 00
 F: +46 320 21 10 10
 E: info@ludvigsvensson.com

