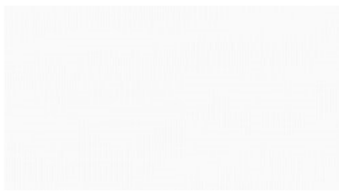


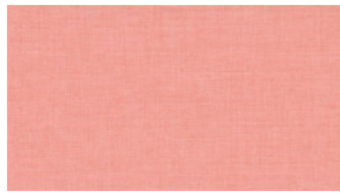


NOVA
Hanging fabrics

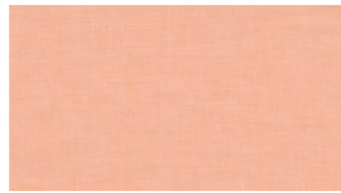
 **svensson**



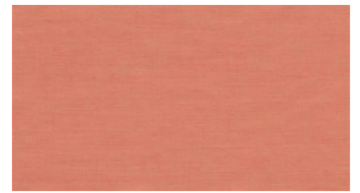
1500



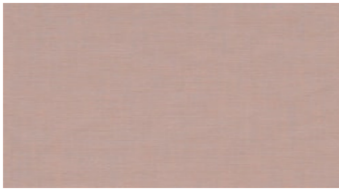
3006



3206



3226



3331



3500



3962



4281



4323



4333



4370



4422



4453



4461



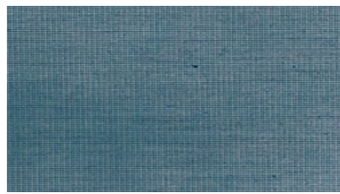
4463



4521



4547



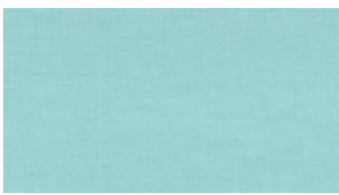
4844



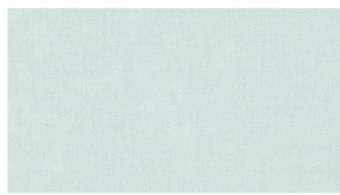
4863



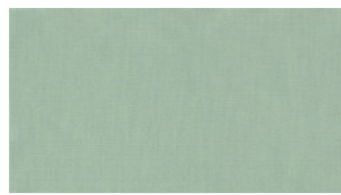
4945



5013



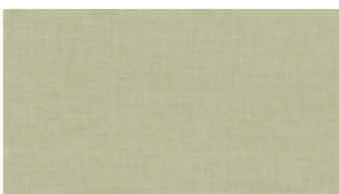
5211



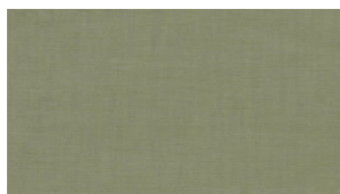
5621



6212



6223



6252



6501



6503



6522



6620



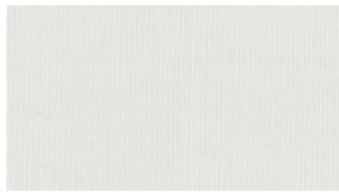
6650



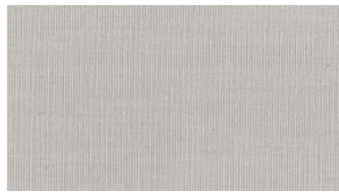
6782



8000



8030



8330



8340



8440



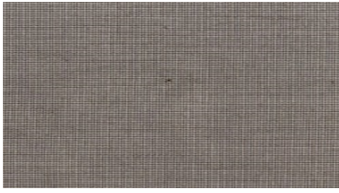
8660



8700



8800



7788

NOVA

Hanging fabrics

Design von: Maja Jakobsson
Breite: 300 cm
Gewicht: 110 G/M²
Material: Trevira CS 100%
Einlaufen: 2 %

Color fastness:
Against dry rubbing according to EN ISO 105-X12:
 - 4 (Scale 1-5)
Gegen Licht nach EN ISO 105-B02
 - 5-7 (Skala 1-8)
Against washing according to EN ISO 105-C06
 - 5 (Scale 1-5)
Against wet rubbing according to EN ISO 105-X12:
 - 3 (Scale 1-5)

Schwerentflammbarkeit:
 - BS 5867:
 - DIN 4102-1 class B1
 - IMO FTP Code Part 7
 - EN 13773 class 1

Wartungsanweisungen:



Zertifikate:



For further information:

Svensson
 511 82 Kinna, Sweden

T: +46 320 20 92 00
 F: +46 320 21 10 10
 E: info@ludvigsvensson.com

