



**GRAIN**  
Hanging fabrics



3032



3040



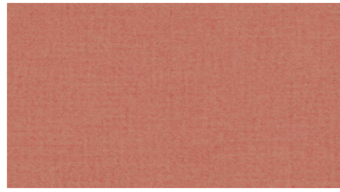
3310



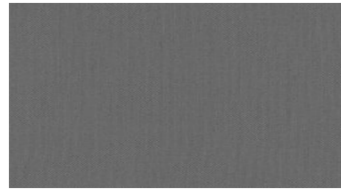
3325



3360



3524



3560



3631



3871



4021



4333



4340



4362



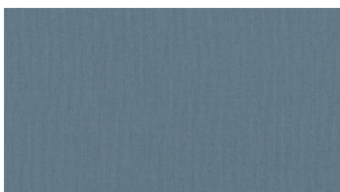
4421



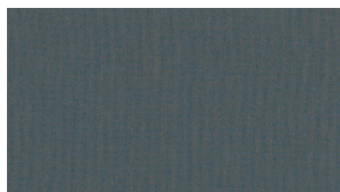
4472



4510



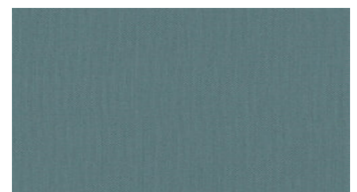
4533



4552



4554



4641

## GRAIN

### Hanging fabrics

**Breite:** 300 cm

**Gewicht:** 190 G/M<sup>2</sup>

**Material:** Trevira CS 100%

**Einlaufen:** 2 %

**Farbechtheit:**

*Gegen Licht nach EN ISO 105-B02*

- ≥ 5-7 (Skala 1-8)

*Against washing according to EN*

*ISO 105-C06*

- 5 (Scale 1-5)

**Schwerentflammbarkeit:**

- BS 5867:

- DIN 4102-1 class B1

- IMO FTP Code Part 7

- UNI 9177, Class 1

- EN 13773, Class 1

- EN 13501-1, B-s1, d0

- NFPA 701

- UNI 8456/8457

**Akustik:**

Messung der Schallabsorption in  
Hallräumen EN ISO 354:2003. Schallabsorber

fr die Anwendug in Gebäuden Bewertung

der Schallaabsorption: EN ISO 11654:1997:

w = 0,60 Class C

**Wartungsanweisungen:**



**For further information:**

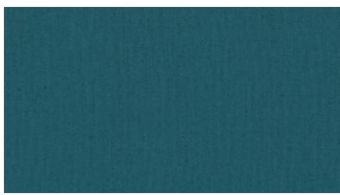
Svensson  
511 82 Kinna, Sweden

T: +46 320 20 92 00

F: +46 320 21 10 10

E: info@ludvigsvensson.com





4645



5040



5060



5431



6042



6222



6235



6423



6450



6510



6521



6530



6540



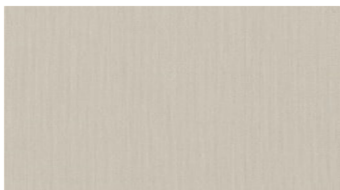
6630



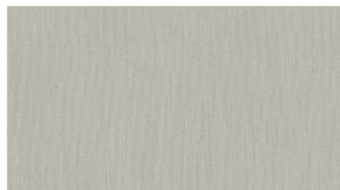
6635



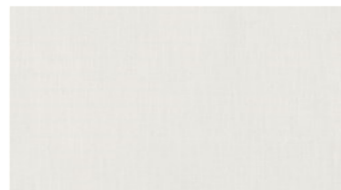
6780



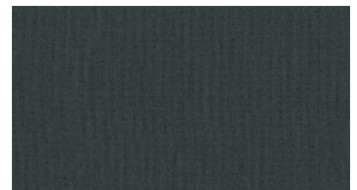
6820



6930



8000



8500

## GRAIN

### Hanging fabrics

**Breite:** 300 cm  
**Gewicht:** 190 G/M<sup>2</sup>  
**Material:** Trevira CS 100%  
**Einlaufen:** 2 %

**Farbechtheit:**  
*Gegen Licht nach EN ISO 105-B02*  
 - ≥ 5-7 (Skala 1-8)  
*Against washing according to EN ISO 105-C06*  
 - 5 (Scale 1-5)

**Schwerentflammbarkeit:**  
 - BS 5867:  
 - DIN 4102-1 class B1  
 - IMO FTP Code Part 7  
 - UNI 9177, Class 1  
 - EN 13773, Class 1  
 - EN 13501-1, B-s1, d0  
 - NFPA 701  
 - UNI 8456/8457

**Akustik:**  
 Messung der Schallabsorption in  
 Hallräumen EN ISO 354:2003. Schallabsorber  
 für die Anwendung in Gebäuden Bewertung  
 der Schallaabsorption: EN ISO 11654:1997:  
 w = 0,60 Class C

#### Wartungsanweisungen:



#### For further information:

Svensson  
 511 82 Kinna, Sweden

T: +46 320 20 92 00  
 F: +46 320 21 10 10  
 E: info@ludvigsvensson.com

