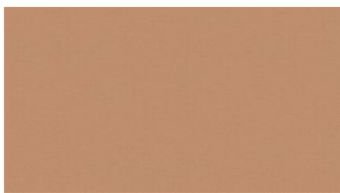


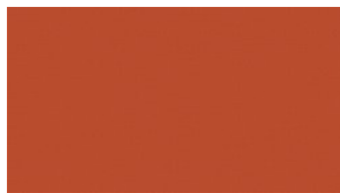


SEMI
Upholstery fabrics

 **svensson**



3124



3227



3363



3418



3436



3481



3554



3622



4342



4363



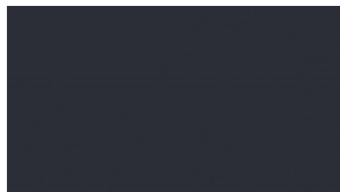
4424



4432



4570



4572



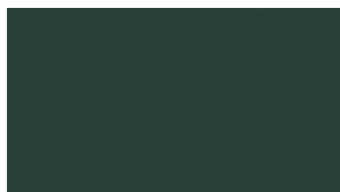
4852



4863



5042



5572



5663



5745

SEMI Upholstery fabrics

Breite: 140 cm
Gewicht: 330 G/M²
Material: Wolle 85%
 Polyamid 15%

Color fastness:
Against dry rubbing according to EN ISO 105-X12:
 - ≥ 4 (Scale 1-5)
Gegen Licht nach EN ISO 105-B02
 - ≥ 5-7 (Skala 1-8)
Against wet rubbing according to EN ISO 105-X12:
 - ≥ 3-4 (Scale 1-5)

Scheuerfestigkeit:
Martindale (Nach: EN ISO 12947-2):
 - 100000 Touren

Schwerentflammbarkeit:
 - EN ISO 1021 part 1, 2- BS 5852
 Crib 5- IMO FTP Code 2010:
 - BS 5852 Crib 5
 - IMO FTP Code 2010: Part 8
 - UNI 9175, 1 IM
 - TB 117

Wartungsanweisungen:



For further information:

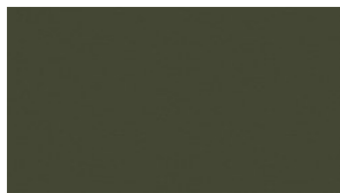
Svensson
 511 82 Kinna, Sweden

T: +46 320 20 92 00
 F: +46 320 21 10 10
 E: info@ludvigsvensson.com





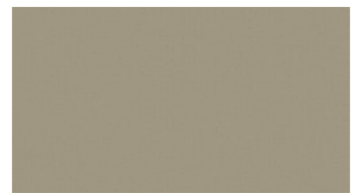
5925



6081



6145



6431



6434



6536



6623



6661



6727



6745



6750



6752



6918



6936



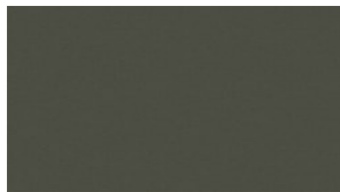
6963



8400



8500



8600



8700



8900

SEMI Upholstery fabrics

Breite: 140 cm
Gewicht: 330 G/M²
Material: Wolle 85%
 Polyamid 15%

Color fastness:
Against dry rubbing according to EN ISO 105-X12:
 - ≥ 4 (Scale 1-5)
Gegen Licht nach EN ISO 105-B02
 - ≥ 5-7 (Skala 1-8)
Against wet rubbing according to EN ISO 105-X12:
 - ≥ 3-4 (Scale 1-5)

Scheuerfestigkeit:
Martindale (Nach: EN ISO 12947-2):
 - 100000 Touren

Schwerentflammbarkeit:
 - EN ISO 1021 part 1, 2- BS 5852
 Crib 5- IMO FTP Code 2010:
 - BS 5852 Crib 5
 - IMO FTP Code 2010: Part 8
 - UNI 9175, 1 IM
 - TB 117

Wartungsanweisungen:



For further information:

Svensson
 511 82 Kinna, Sweden

T: +46 320 20 92 00
 F: +46 320 21 10 10
 E: info@ludvigsvensson.com

