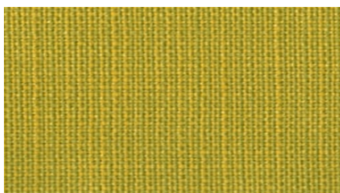


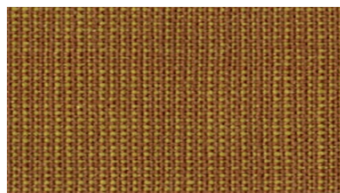


RAMI PLUS
Upholstery fabrics

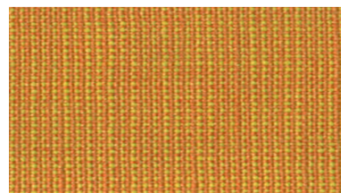
 **svensson**



6518



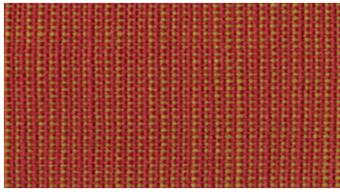
6645



6818



3208



3118



3527



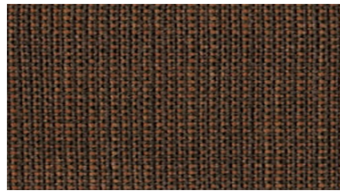
3736



3854



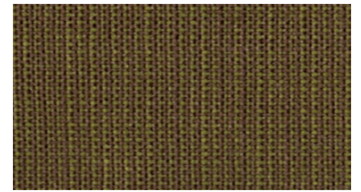
3372



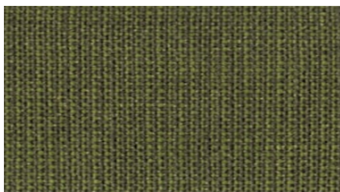
6954



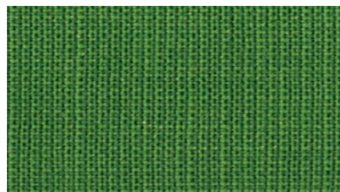
3245



6672



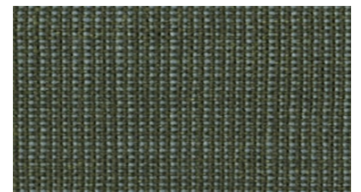
5254



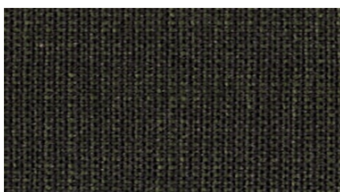
5827



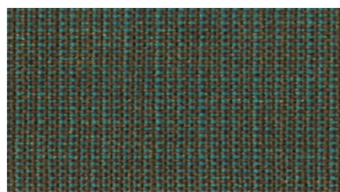
5645



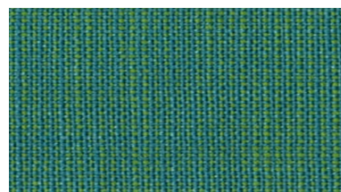
4852



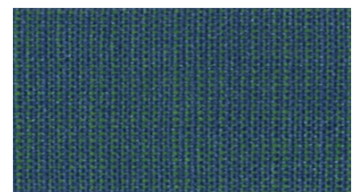
5881



5045



5516



4754

RAMI PLUS

Upholstery fabrics

Design von: Eva Larsson

Breite: 140 cm

Gewicht: 600 G/M²

Material: Wolle 80%
Rami 20%

Color fastness:

Against dry rubbing according to
EN ISO 105-X12:

- 4 (Scale 1-5)

Gegen Licht nach EN ISO 105-B02

- 5-7 (Skala 1-8)

Against wet rubbing according to

EN ISO 105-X12:

- 3-4 (Scale 1-5)

Scheuerfestigkeit:

Martindale (Nach: EN ISO 12947-2):

- 70000 Touren

Schwerentflammbarkeit:

- IMO FTP Code Part 8 (IMO Res.

A.652 (16)

- UNI 9175, 1 IM

Wartungsanweisungen:



Zertifikate:



For further information:

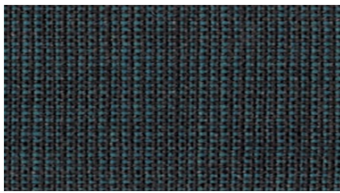
Svensson
511 82 Kinna, Sweden

T: +46 320 20 92 00

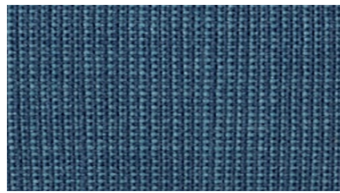
F: +46 320 21 10 10

E: info@ludvigsvensson.com

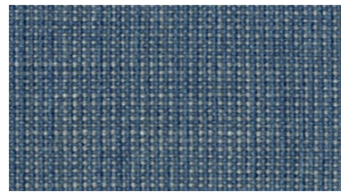




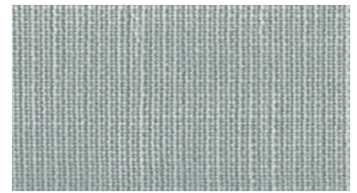
4454



4434



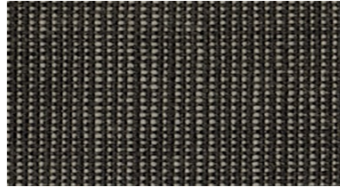
6663



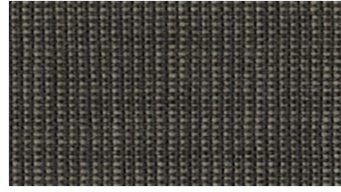
4540



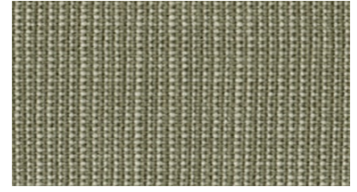
8700



8800



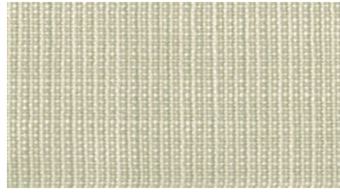
6570



6730



6720



6810

RAMI PLUS

Upholstery fabrics

Design von: Eva Larsson

Breite: 140 cm

Gewicht: 600 G/M²

Material: Wolle 80%
Rami 20%

Color fastness:

Against dry rubbing according to
EN ISO 105-X12:

- 4 (Scale 1-5)

Gegen Licht nach EN ISO 105-B02

- 5-7 (Skala 1-8)

Against wet rubbing according to

EN ISO 105-X12:

- 3-4 (Scale 1-5)

Scheuerfestigkeit:

Martindale (Nach: EN ISO 12947-2):

- 70000 Touren

Schwerentflammbarkeit:

- IMO FTP Code Part 8 (IMO Res.

A.652 (16)

- UNI 9175, 1 IM

Wartungsanweisungen:



Zertifikate:



For further information:

Svensson
511 82 Kinna, Sweden

T: +46 320 20 92 00

F: +46 320 21 10 10

E: info@ludvigsvensson.com

