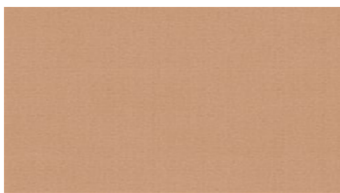




RAMI
Upholstery fabrics



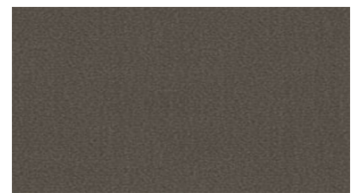
3022



3027



3030



3072



3124



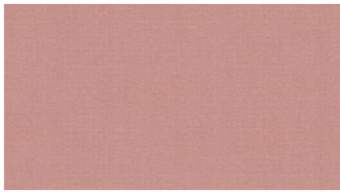
3145



3318



3536



3622



3651



3726



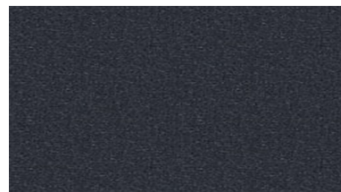
3863



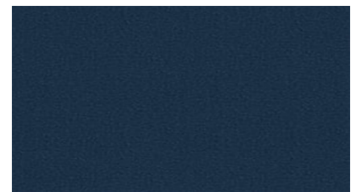
4342



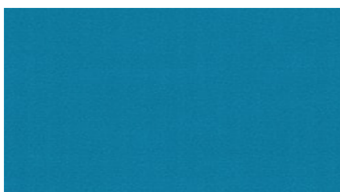
4345



4380



4454



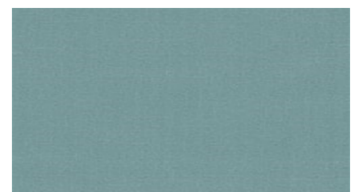
4625



4642



4745



4831

RAMI

Upholstery fabrics

Breite: 140 cm
Gewicht: 600 G/M²
Material: Wolle 80%
 Rami 20%

Color fastness:
Against dry rubbing according to EN ISO 105-X12:
 - 4 (Scale 1-5)
Gegen Licht nach EN ISO 105-B02
 - 5-7 (Skala 1-8)
Against wet rubbing according to EN ISO 105-X12:
 - 3-4 (Scale 1-5)

Scheuerfestigkeit:
Martindale (Nach: EN ISO 12947-2):
 - 70000 Touren

Schwerentflammbarkeit:
 - BS 5852 Crib 5
 - UNI 9175, 1 IM
 - TB 117
 - IMO FTP Code Part 8 (IMO Res. A.652 (16))

Wartungsanweisungen:

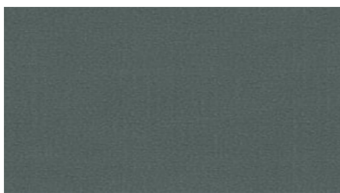


For further information:

Svensson
 511 82 Kinna, Sweden

T: +46 320 20 92 00
 F: +46 320 21 10 10
 E: info@ludvigsvensson.com





4861



5028



5872



5936



6054



6072



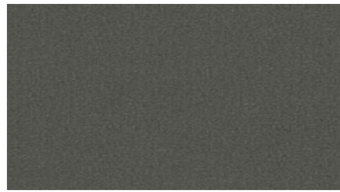
6165



6331



6336



6370



6380



6636



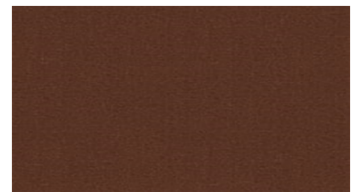
6727



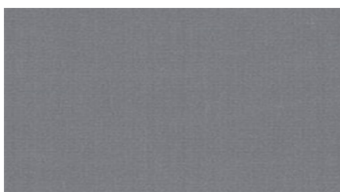
6810



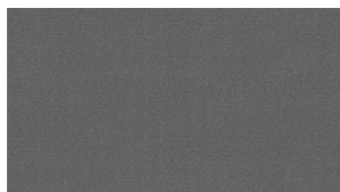
6918



6972



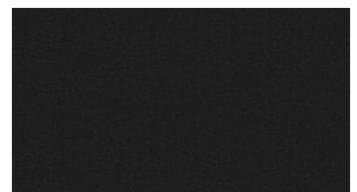
8200



8500



8700



8900

RAMI

Upholstery fabrics

Breite: 140 cm

Gewicht: 600 G/M²

Material: Wolle 80%
Rami 20%

Color fastness:

Against dry rubbing according to

EN ISO 105-X12:

- 4 (Scale 1-5)

Gegen Licht nach EN ISO 105-B02

- 5-7 (Skala 1-8)

Against wet rubbing according to

EN ISO 105-X12:

- 3-4 (Scale 1-5)

Scheuerfestigkeit:

Martindale (Nach: EN ISO 12947-2):

- 70000 Touren

Schwerentflammbarkeit:

- BS 5852 Crib 5

- UNI 9175, 1 IM

- TB 117

- IMO FTP Code Part 8 (IMO Res.

A.652 (16))

Wartungsanweisungen:



For further information:

Svensson
511 82 Kinna, Sweden

T: +46 320 20 92 00

F: +46 320 21 10 10

E: info@ludvigsvensson.com

