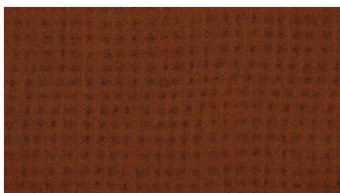
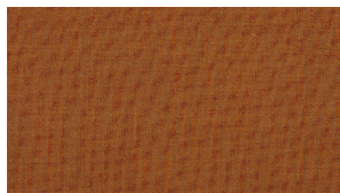




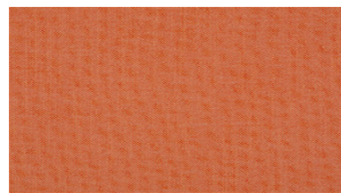
**KHAKI**  
Upholstery fabrics



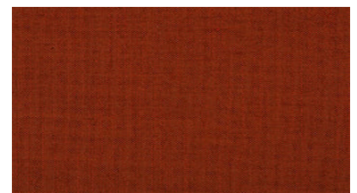
3035



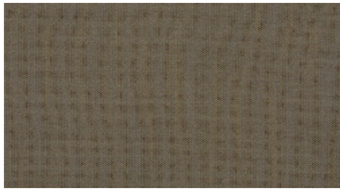
3044



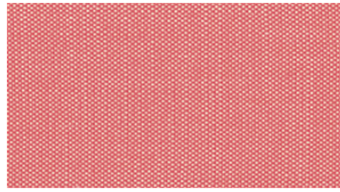
3234



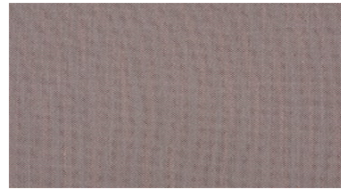
3236



3550



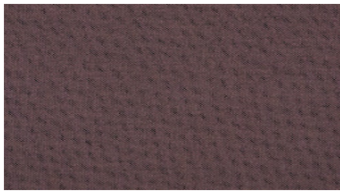
3617



3651



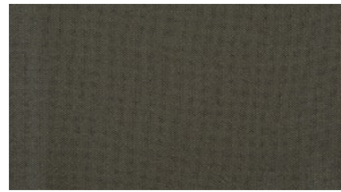
3745



3952



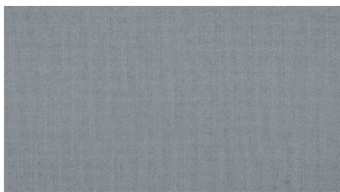
4163



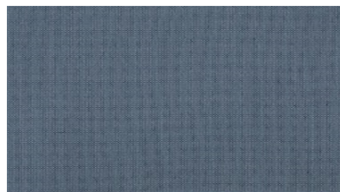
4360



4372



4433



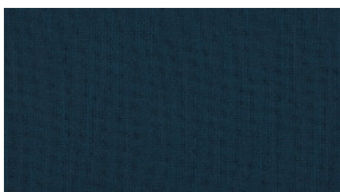
4444



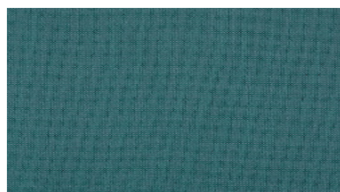
4452



4550



4554



4653



4745



4760

## KHAKI

### Upholstery fabrics

**Breite:** 140 cm  
**Gewicht:** 360 G/M<sup>2</sup>  
**Material:** Trevira CS 100%  
**Einlaufen:** 2 %

**Color fastness:**  
*Against dry rubbing according to EN ISO 105-X12:*  
 - 4-5 (Scale 1-5)  
*Gegen Licht nach EN ISO 105-B02*  
 - 5-7 (Skala 1-8)  
*Against wet rubbing according to EN ISO 105-X12:*  
 - 4 (Scale 1-5)

**Scheuerfestigkeit:**  
*Martindale (Nach: EN ISO 12947-2):*  
 - 50000 Touren

**Schwerentflammbarkeit:**  
 - EN 1021 part 1, 2- DIN 4102-1  
 B1- IMO FTP Code 2010:  
 - DIN 4102-1 B1  
 - IMO FTP Code 2010: Part 8  
 - BS 5852 Crib 5  
 - BS 5867-2 Type B  
 - NF P 92 503-507, M1  
 - EN 13773, Class 1  
 - FAR/JAR/CS 25.853  
 - FMVSS 302  
 - EN 13501-1

#### Wartungsanweisungen:

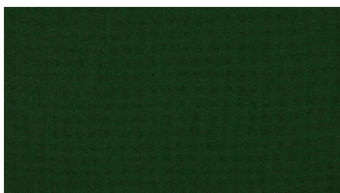


#### For further information:

Svensson  
 511 82 Kinna, Sweden

T: +46 320 20 92 00  
 F: +46 320 21 10 10  
 E: info@ludvigsvensson.com

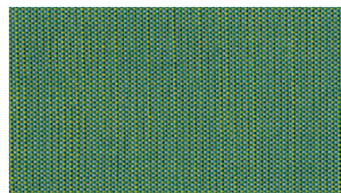




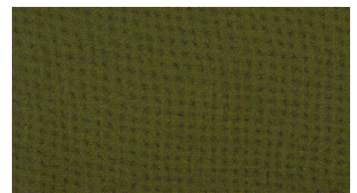
5445



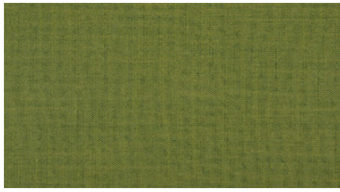
5451



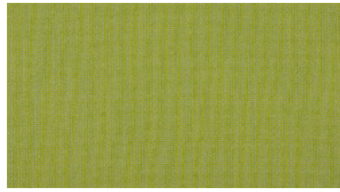
5535



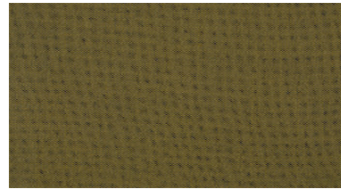
5863



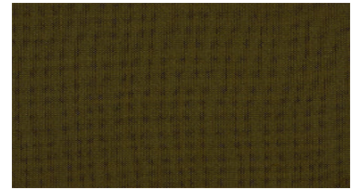
6043



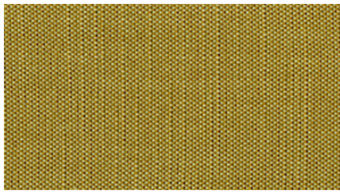
6235



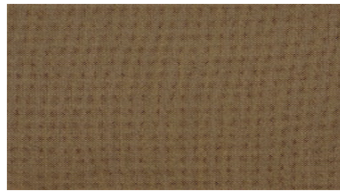
6252



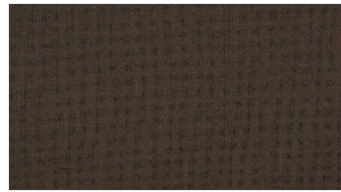
6272



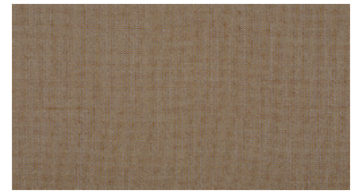
6544



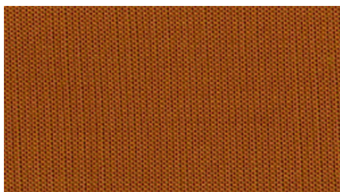
6560



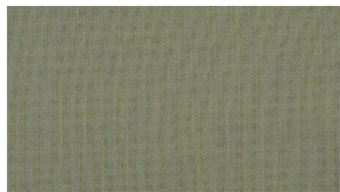
6662



6750



6835



6841



8500

## KHAKI

### Upholstery fabrics

**Breite:** 140 cm  
**Gewicht:** 360 G/M<sup>2</sup>  
**Material:** Trevira CS 100%  
**Einlaufen:** 2 %

**Color fastness:**  
*Against dry rubbing according to EN ISO 105-X12:*  
 - 4-5 (Scale 1-5)  
*Gegen Licht nach EN ISO 105-B02*  
 - 5-7 (Skala 1-8)  
*Against wet rubbing according to EN ISO 105-X12:*  
 - 4 (Scale 1-5)

**Scheuerfestigkeit:**  
*Martindale (Nach: EN ISO 12947-2):*  
 - 50000 Touren

**Schwerentflammbarkeit:**  
 - EN 1021 part 1, 2- DIN 4102-1  
 B1- IMO FTP Code 2010:  
 - DIN 4102-1 B1  
 - IMO FTP Code 2010: Part 8  
 - BS 5852 Crib 5  
 - BS 5867-2 Type B  
 - NF P 92 503-507, M1  
 - EN 13773, Class 1  
 - FAR/JAR/CS 25.853  
 - FMVSS 302  
 - EN 13501-1

#### Wartungsanweisungen:



#### For further information:

Svensson  
 511 82 Kinna, Sweden

T: +46 320 20 92 00  
 F: +46 320 21 10 10  
 E: info@ludvigsvensson.com

